

Datasheet for ABIN2784227
anti-NPRL2 antibody (Middle Region)[Go to Product page](#)[1 Image](#)[1 Publication](#)

Overview

Quantity:	100 µL
Target:	NPRL2
Binding Specificity:	Middle Region
Reactivity:	Human, Mouse, Rat, Cow, Rabbit, Dog, Guinea Pig, Horse
Host:	Rabbit
Clonality:	Polyclonal
Application:	Western Blotting (WB)

Product Details

Immunogen:	The immunogen is a synthetic peptide directed towards the middle region of human TUSC4
Sequence:	SLSPGTTVRD LIGRHPQQLQ HVDERKLIQF GLMKNLIRRL QKYPVRVTRE
Predicted Reactivity:	Cow: 100%, Dog: 93%, Guinea Pig: 100%, Horse: 93%, Human: 100%, Mouse: 100%, Rabbit: 100%, Rat: 100%
Characteristics:	This is a rabbit polyclonal antibody against TUSC4. It was validated on Western Blot using a cell lysate as a positive control.
Purification:	Affinity Purified

Target Details

Target:	NPRL2
Alternative Name:	TUSC4 (NPRL2 Products)

Target Details

Background: TUSC4 suppresses Src-dependent tyrosine phosphorylation and activation of PDPK1 and its downstream signaling. TUSC4 down-regulates PDPK1 kinase activity by interfering with tyrosine phosphorylation at the Tyr-9 Tyr-373 and Tyr-376 residues. TUSC4 may act

Alias Symbols: NPR2L, NPRL2, NPR2, TUSC4

Protein Interaction Partner: UBC, HSP90AA1, CDKN1A, ANXA7, NPRL3, UBE2M, PRKAR1A,

Protein Size: 380

Molecular Weight: 44 kDa

Gene ID: 10641

NCBI Accession: [NM_006545](#), [NP_006536](#)

UniProt: [Q8WTW4](#)

Application Details

Application Notes: Optimal working dilutions should be determined experimentally by the investigator.

Comment: Antigen size: 380 AA

Restrictions: For Research Use only

Handling

Format: Liquid

Concentration: Lot specific

Buffer: Liquid. Purified antibody supplied in 1x PBS buffer with 0.09 % (w/v) sodium azide and 2 % sucrose.

Preservative: Sodium azide

Precaution of Use: This product contains Sodium azide: a POISONOUS AND HAZARDOUS SUBSTANCE which should be handled by trained staff only.

Handling Advice: Avoid repeated freeze-thaw cycles.

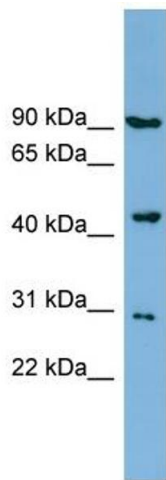
Storage: -20 °C

Storage Comment: For short term use, store at 2-8°C up to 1 week. For long term storage, store at -20°C in small aliquots to prevent freeze-thaw cycles.

Publications

Product cited in: Jena, Janjanam, Naru, Kumar, Kumar, Singh, Mohapatra, Kola, Anand, Jaswal, Verma, Malakar, Dang, Kaushik, Reddy, Mohanty: "DIGE based proteome analysis of mammary gland tissue in water buffalo (Bubalus bubalis): Lactating vis-a-vis heifer." in: **Journal of proteomics**, Vol. 119C , pp. 100-111, (2015) ([PubMed](#)).

Images



Western Blotting

Image 1. WB Suggested Anti-TUSC4 Antibody Titration: 0.2-1 ug/ml ELISA Titer: 1:1562500 Positive Control: NCI-H226 cell lysate