

Datasheet for ABIN2784231  
**anti-PWP1 antibody (C-Term)**[Go to Product page](#)

## 1 Image

## Overview

Quantity:	100 µL
Target:	PWP1
Binding Specificity:	C-Term
Reactivity:	Human, Mouse, Rat, Cow, Dog, Rabbit, Guinea Pig, Horse
Host:	Rabbit
Clonality:	Polyclonal
Conjugate:	This PWP1 antibody is un-conjugated
Application:	Western Blotting (WB)

## Product Details

Immunogen:	The immunogen is a synthetic peptide directed towards the C terminal region of human PWP1
Sequence:	FCSSCCPDLP FIYAFGGQKE GLRVWDISTV SSVNEAFGRR ERLVLGSARN
Predicted Reactivity:	Cow: 100%, Dog: 100%, Guinea Pig: 100%, Horse: 100%, Human: 100%, Mouse: 100%, Rabbit: 100%, Rat: 100%
Characteristics:	This is a rabbit polyclonal antibody against PWP1. It was validated on Western Blot using a cell lysate as a positive control.
Purification:	Affinity Purified

## Target Details

Target:	PWP1
---------	------

## Target Details

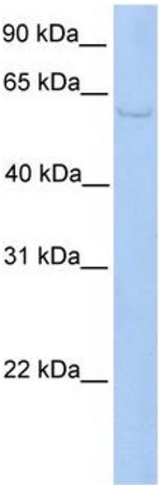
Alternative Name:	PWP1 ( <a href="#">PWP1 Products</a> )
Background:	<p>PWP1 belongs to the WD repeat PWP1 family. It contains 5 WD repeats. PWP1 may play an important role in cell growth and/or transcription.</p> <p>Alias Symbols: IEF-SSP-9502</p> <p>Protein Interaction Partner: UBC, LIN28A, RNF2, BLM, SOX2, APP, CUL4A, DDA1, SSBP1, PSG2, HSPA5, CAND1, COPS5, COPS6, CUL1, CUL3, NEDD8, DDB1, SIRT7, NOP56, NFYA, HOXA3, SMURF1,</p> <p>Protein Size: 501</p>
Molecular Weight:	56 kDa
Gene ID:	11137
NCBI Accession:	<a href="#">NM_007062</a> , <a href="#">NP_008993</a>
UniProt:	<a href="#">Q13610</a>

## Application Details

Application Notes:	Optimal working dilutions should be determined experimentally by the investigator.
Comment:	Antigen size: 501 AA
Restrictions:	For Research Use only

## Handling

Format:	Liquid
Concentration:	Lot specific
Buffer:	Liquid. Purified antibody supplied in 1x PBS buffer with 0.09 % (w/v) sodium azide and 2 % sucrose.
Preservative:	Sodium azide
Precaution of Use:	This product contains Sodium azide: a POISONOUS AND HAZARDOUS SUBSTANCE which should be handled by trained staff only.
Handling Advice:	Avoid repeated freeze-thaw cycles.
Storage:	-20 °C
Storage Comment:	For short term use, store at 2-8°C up to 1 week. For long term storage, store at -20°C in small aliquots to prevent freeze-thaw cycles.



Western Blotting

**Image 1.** WB Suggested Anti-PWP1 Antibody Titration: 0.2-1 ug/ml Positive Control: HepG2 cell lysate