



[Go to Product page](#)

Datasheet for ABIN2784233

anti-FLASH antibody (N-Term)

1 Image

1 Publication

Overview

Quantity:	100 µL
Target:	FLASH (CASP8AP2)
Binding Specificity:	N-Term
Reactivity:	Human, Mouse, Rat, Dog, Cow, Guinea Pig, Horse, Pig, Rabbit
Host:	Rabbit
Clonality:	Polyclonal
Conjugate:	This FLASH antibody is un-conjugated
Application:	Western Blotting (WB)

Product Details

Immunogen:	The immunogen is a synthetic peptide directed towards the N terminal region of human CASP8AP2
Sequence:	SLKKNISALI KTARVEINRK DEEISNLHQR LSEFPHFRNN HKTARTFDTV
Predicted Reactivity:	Cow: 93%, Dog: 86%, Guinea Pig: 86%, Horse: 93%, Human: 100%, Mouse: 100%, Pig: 93%, Rabbit: 93%, Rat: 100%
Characteristics:	This is a rabbit polyclonal antibody against CASP8AP2. It was validated on Western Blot using a cell lysate as a positive control.
Purification:	Affinity Purified

Target Details

Target:	FLASH (CASP8AP2)
---------	------------------

Target Details

Alternative Name: CASP8AP2 ([CASP8AP2 Products](#))

Background: CASP8AP2 is highly similar to FLASH, a mouse apoptotic protein identified by its interaction with the death-effector domain (DED) of caspase 8. Studies of FLASH protein suggested that this protein may be a component of the death-inducing signaling complex that includes Fas receptor, Fas-binding adapter FADD, and caspase 8, and plays a regulatory role in Fas-mediated apoptosis. This protein is highly similar to FLASH, a mouse apoptotic protein identified by its interaction with the death-effector domain (DED) of caspase 8. Studies of FLASH protein suggested that this protein may be a component of the death-inducing signaling complex that includes Fas receptor, Fas-binding adapter FADD, and caspase 8, and plays a regulatory role in Fas-mediated apoptosis. Publication Note: This RefSeq record includes a subset of the publications that are available for this gene. Please see the Entrez Gene record to access additional publications.

Alias Symbols: CED-4, FLASH, FLJ11208, KIAA1315, RIP25

Protein Interaction Partner: ced-3, BCL2L1, PML, CTBP2, CREM, SUMO1, SUMO2, PIAS1, CASP10, TRIM21, UBC, CALM1, UBE2I, SREBF2, GLUL, SP100, CASP8AP2, FADD, TRAF2, CASP8, FAS,

Protein Size: 1982

Molecular Weight: 223 kDa

Gene ID: 9994

NCBI Accession: [NM_012115](#), [NP_036247](#)

UniProt: [Q9UKL3](#)

Pathways: [Chromatin Binding](#), [Positive Regulation of Endopeptidase Activity](#)

Application Details

Application Notes: Optimal working dilutions should be determined experimentally by the investigator.

Comment: Antigen size: 1982 AA

Restrictions: For Research Use only

Handling

Format: Liquid

Concentration: Lot specific

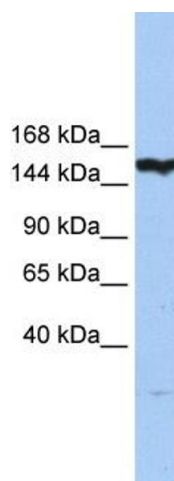
Handling

Buffer:	Liquid. Purified antibody supplied in 1x PBS buffer with 0.09 % (w/v) sodium azide and 2 % sucrose.
Preservative:	Sodium azide
Precaution of Use:	This product contains Sodium azide: a POISONOUS AND HAZARDOUS SUBSTANCE which should be handled by trained staff only.
Handling Advice:	Avoid repeated freeze-thaw cycles.
Storage:	-20 °C
Storage Comment:	For short term use, store at 2-8°C up to 1 week. For long term storage, store at -20°C in small aliquots to prevent freeze-thaw cycles.

Publications

Product cited in: Ewing, Chu, Elisma, Li, Taylor, Climie, McBroom-Cerajewski, Robinson, OConnor, Li, Taylor, Dharsee, Ho, Heilbut, Moore, Zhang, Ornatsky, Bukhman, Ethier, Sheng, Vasilescu, Abu-Farha, Lambert, Duewel et al.: "Large-scale mapping of human protein-protein interactions by mass spectrometry. ..." in: **Molecular systems biology**, Vol. 3, pp. 89, (2007) ([PubMed](#)).

Images



Western Blotting

Image 1. WB Suggested Anti-CASP8AP2 Antibody Titration:
0.2-1 ug/ml Positive Control: Hela cell lysate