

Datasheet for ABIN2784237
anti-MED4 antibody (C-Term)[Go to Product page](#)

3 Images

Overview

Quantity:	100 µL
Target:	MED4
Binding Specificity:	C-Term
Reactivity:	Human, Rat, Mouse, Cow, Zebrafish (Danio rerio), Dog, Guinea Pig, Horse, Rabbit
Host:	Rabbit
Clonality:	Polyclonal
Application:	Western Blotting (WB), Immunohistochemistry (IHC)

Product Details

Immunogen:	The immunogen is a synthetic peptide directed towards the C terminal region of human MED4
Sequence:	APQYPWQSND MSMNMLPPNH SSDFLLEPPG HNKENEDDVE IMSTDSSSSS
Predicted Reactivity:	Cow: 100%, Dog: 100%, Guinea Pig: 100%, Horse: 100%, Human: 100%, Mouse: 100%, Rabbit: 100%, Rat: 100%, Zebrafish: 100%
Characteristics:	This is a rabbit polyclonal antibody against MED4. It was validated on Western Blot using a cell lysate as a positive control.
Purification:	Affinity Purified

Target Details

Target:	MED4
Alternative Name:	MED4 (MED4 Products)

Target Details

Background:	<p>TMED4 contains 1 GOLD domain and belongs to the EMP24/GP25L family. The function remains unknown.</p> <p>Alias Symbols: DRIP36, FLJ10956, HSPC126, RP11-90M2.2, TRAP36, VDRIP, ARC36</p> <p>Protein Interaction Partner: LRRFIP1, SMARCE1, SMARCD1, SDCBP, FAM13C, TXLNA, AMOT, C1orf216, MAB21L3, FRMD6, HAUS1, CCDC101, IFT20, USHBP1, CCDC146, CTNNBL1, CCHCR1, TNFAIP8, FTCD, NDC80, SSX3, KIFC3, AES, NDE1, UBC, RPA3, RPA2, RPA1, CDK19, CDK8, MED19, MED26, ESR2, EPAS1, FBXW7, M</p> <p>Protein Size: 270</p>
Molecular Weight:	30 kDa
Gene ID:	29079
NCBI Accession:	NM_014166 , NP_054885
UniProt:	Q9NPJ6
Pathways:	Intracellular Steroid Hormone Receptor Signaling Pathway , Nuclear Hormone Receptor Binding , Regulation of Lipid Metabolism by PPARalpha

Application Details

Application Notes:	Optimal working dilutions should be determined experimentally by the investigator.
Comment:	Antigen size: 270 AA
Restrictions:	For Research Use only

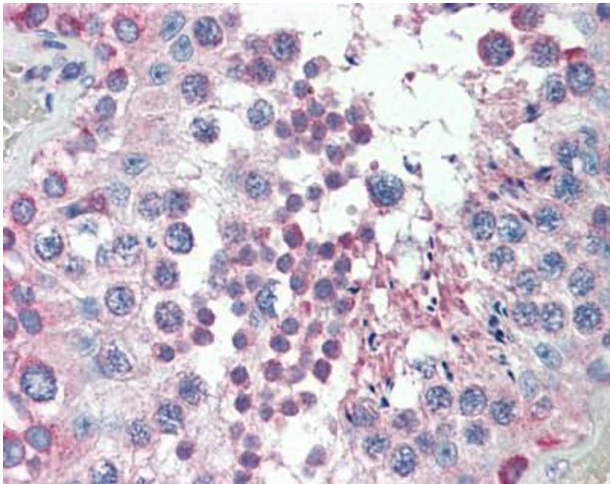
Handling

Format:	Liquid
Concentration:	Lot specific
Buffer:	Liquid. Purified antibody supplied in 1x PBS buffer with 0.09 % (w/v) sodium azide and 2 % sucrose.
Preservative:	Sodium azide
Precaution of Use:	This product contains Sodium azide: a POISONOUS AND HAZARDOUS SUBSTANCE which should be handled by trained staff only.
Handling Advice:	Avoid repeated freeze-thaw cycles.
Storage:	-20 °C

Handling

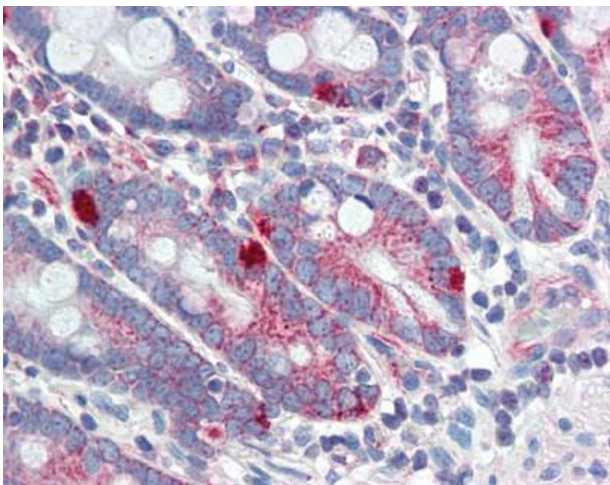
Storage Comment: For short term use, store at 2-8°C up to 1 week. For long term storage, store at -20°C in small aliquots to prevent freeze-thaw cycles.

Images



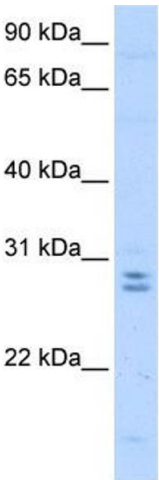
Immunohistochemistry

Image 1.



Immunohistochemistry

Image 2.



Western Blotting

Image 3. WB Suggested Anti-MED4 Antibody Titration:
0.5ug/ml Positive Control: HepG2 cell lysate