

Datasheet for ABIN2784238
anti-LIMD1 antibody (N-Term)

5 Images

[Go to Product page](#)

Overview

Quantity:	100 µL
Target:	LIMD1
Binding Specificity:	N-Term
Reactivity:	Mouse, Human, Rat, Cow, Dog, Guinea Pig, Rabbit, Zebrafish (Danio rerio)
Host:	Rabbit
Clonality:	Polyclonal
Conjugate:	This LIMD1 antibody is un-conjugated
Application:	Western Blotting (WB), Immunohistochemistry (IHC)

Product Details

Immunogen:	The immunogen is a synthetic peptide directed towards the N terminal region of human LIMD1
Sequence:	MDKYDDLGLE ASKFIEDLNM YEASKDGLFR VDKGAGNNPE FEETRRVFAT
Predicted Reactivity:	Cow: 100%, Dog: 93%, Guinea Pig: 100%, Human: 100%, Mouse: 100%, Rabbit: 86%, Rat: 100%, Zebrafish: 100%
Characteristics:	This is a rabbit polyclonal antibody against LIMD1. It was validated on Western Blot using a cell lysate as a positive control.
Purification:	Affinity Purified

Target Details

Target:	LIMD1
---------	-------

Target Details

Alternative Name:	LIMD1 (LIMD1 Products)
Background:	<p>LIMD1 may be involved in cell anchoring via focal adhesions and in the cell cycle, particularly during mitosis. LIMD1 functionally interacts with pRB and the loss of which promotes lung carcinogenesis. Some breast tumors also have altered expression of LIMD1 RNA. LIMD1 may represent a critical tumor suppressor gene.</p> <p>Alias Symbols: -</p> <p>Protein Interaction Partner: NEDD8, SUMO1, UBA6, UBR7, C9orf78, FKBP9, EHD1, GTF3C4, PYGB, PLCG1, LATS2, LATS1, gag-pol, HIPK3, APP, DSTN, IGBP1, SQSTM1, EGLN3, EGLN2, EGLN1, VHL, STAC, UBC, RARA, RPP14,</p> <p>Protein Size: 503</p>
Molecular Weight:	56 kDa
Gene ID:	8994
NCBI Accession:	NM_014240
UniProt:	Q9UGP4
Pathways:	Ribonucleoprotein Complex Subunit Organization

Application Details

Application Notes:	Optimal working dilutions should be determined experimentally by the investigator.
Comment:	Antigen size: 503 AA
Restrictions:	For Research Use only

Handling

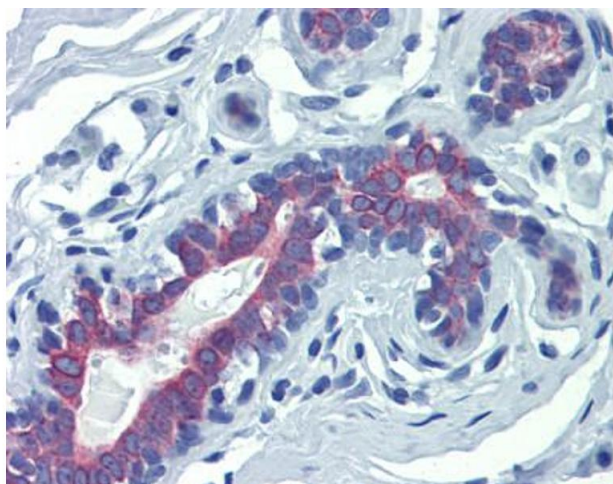
Format:	Liquid
Concentration:	Lot specific
Buffer:	Liquid. Purified antibody supplied in 1x PBS buffer with 0.09 % (w/v) sodium azide and 2 % sucrose.
Preservative:	Sodium azide
Precaution of Use:	This product contains Sodium azide: a POISONOUS AND HAZARDOUS SUBSTANCE which should be handled by trained staff only.
Handling Advice:	Avoid repeated freeze-thaw cycles.

Handling

Storage: -20 °C

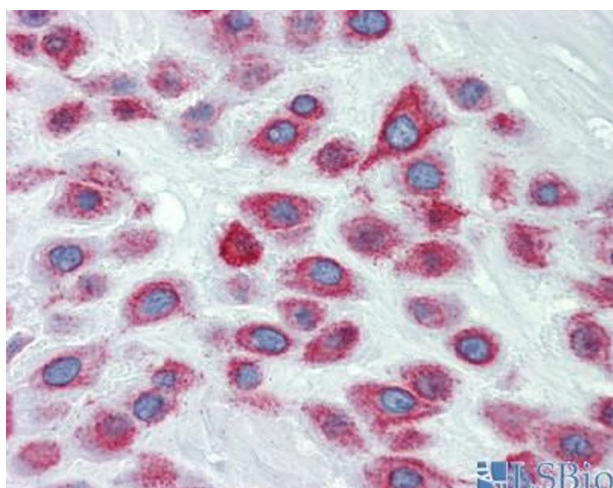
Storage Comment: For short term use, store at 2-8°C up to 1 week. For long term storage, store at -20°C in small aliquots to prevent freeze-thaw cycles.

Validation report #100034 for Immunohistochemistry (IHC)



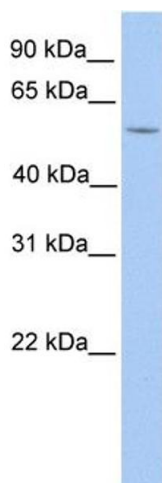
Immunohistochemistry

Image 1.



Immunohistochemistry

Image 2. Human Placenta



Western Blotting

Image 3. WB Suggested Anti-LIMD1 Antibody Titration: 1 ug/ml Positive Control: HepG2 cell lysate LIMD1 is supported by BioGPS gene expression data to be expressed in HepG2

Please check the [product details page](#) for more images. Overall 5 images are available for ABIN2784238.