

Datasheet for ABIN2784242

anti-SIN3B antibody (Middle Region)



[Go to Product page](#)

2 Images

1 Publication

Overview

Quantity:	100 µL
Target:	SIN3B
Binding Specificity:	Middle Region
Reactivity:	Human, Mouse, Rat, Cow, Dog, Horse, Pig, Guinea Pig, Rabbit
Host:	Rabbit
Clonality:	Polyclonal
Conjugate:	This SIN3B antibody is un-conjugated
Application:	Western Blotting (WB)

Product Details

Immunogen:	The immunogen is a synthetic peptide directed towards the middle region of human SIN3B
Sequence:	NDTKALRSKS LLNEIESVYD EHQQHSEGR SAPSSEPHLI FVYEDRQILE
Predicted Reactivity:	Cow: 100%, Dog: 100%, Guinea Pig: 93%, Horse: 86%, Human: 100%, Mouse: 100%, Pig: 100%, Rabbit: 93%, Rat: 93%
Characteristics:	This is a rabbit polyclonal antibody against SIN3B. It was validated on Western Blot using a cell lysate as a positive control.
Purification:	Affinity Purified

Target Details

Target:	SIN3B
---------	-------

Target Details

Alternative Name:	SIN3B (SIN3B Products)
Background:	<p>SIN3B acts as a transcriptional repressor. It interacts with MXI1 to repress MYC responsive genes and antagonize MYC oncogenic activities. It also interacts with MAD-MAX heterodimers by binding to MAD. The heterodimer then represses transcription by tethering SIN3B to DNA. SIN3B also forms a complex with FOXK1 which represses transcription.</p> <p>Alias Symbols: KIAA0700</p> <p>Protein Interaction Partner: SOX2, HDAC1, HDAC2, UBC, ESR1, AR, TFAP4, TP53, SUMO2, KLF16, MORF4L1, MORF4L2, MRGBP, KDM5A, CIITA, NR1D2, COPS2, SMN1, PBX1, REST, ZBTB4, ARID4A, MYT1, MXI1, SAP25, SMARCE1, SMARCB1, SMARCA4, SMARCA2, CBFA2T3, RNF220, ZBTB16, SETDB1, HDAC9, IKZF4, IKZF1</p> <p>Protein Size: 1162</p>
Molecular Weight:	133 kDa
Gene ID:	23309
NCBI Accession:	NM_015260 , NP_056075
UniProt:	O75182

Application Details

Application Notes:	Optimal working dilutions should be determined experimentally by the investigator.
Comment:	Antigen size: 1162 AA
Restrictions:	For Research Use only

Handling

Format:	Liquid
Concentration:	Lot specific
Buffer:	Liquid. Purified antibody supplied in 1x PBS buffer with 0.09 % (w/v) sodium azide and 2 % sucrose.
Preservative:	Sodium azide
Precaution of Use:	This product contains Sodium azide: a POISONOUS AND HAZARDOUS SUBSTANCE which should be handled by trained staff only.
Handling Advice:	Avoid repeated freeze-thaw cycles.

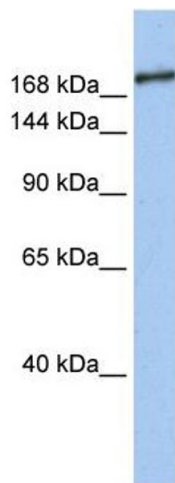
Handling

Storage:	-20 °C
Storage Comment:	For short term use, store at 2-8°C up to 1 week. For long term storage, store at -20°C in small aliquots to prevent freeze-thaw cycles.

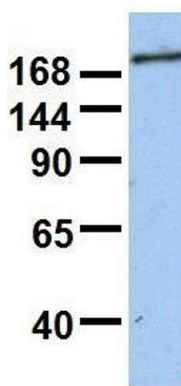
Publications

Product cited in:	Ewing, Chu, Elisma, Li, Taylor, Climie, McBroom-Cerajewski, Robinson, OConnor, Li, Taylor, Dharsee, Ho, Heilbut, Moore, Zhang, Ornatsky, Bukhman, Ethier, Sheng, Vasilescu, Abu-Farha, Lambert, Duewel et al.: "Large-scale mapping of human protein-protein interactions by mass spectrometry. ..." in: Molecular systems biology , Vol. 3, pp. 89, (2007) (PubMed).
-------------------	--

Images



SIN3B



Western Blotting

Image 1. WB Suggested Anti-SIN3B Antibody Titration: 0.2-1 ug/ml Positive Control: Human brain

Western Blotting

Image 2. Host: Rabbit Target Name: SIN3B Sample Type: Human Fetal Brain Antibody Dilution: 1.0ug/ml