

Datasheet for ABIN2784243
anti-SIN3B antibody (Middle Region)[Go to Product page](#)[1 Image](#)[1 Publication](#)

Overview

Quantity:	100 µL
Target:	SIN3B
Binding Specificity:	Middle Region
Reactivity:	Human, Mouse, Rat, Cow, Dog, Horse, Pig, Guinea Pig, Zebrafish (Danio rerio)
Host:	Rabbit
Clonality:	Polyclonal
Application:	Western Blotting (WB)

Product Details

Immunogen:	The immunogen is a synthetic peptide directed towards the middle region of human SIN3B
Sequence:	LVSDDVCLKV VELYLNEKKR GAAGGNLSSR CVRAARETSY QWKAERCMAD
Predicted Reactivity:	Cow: 100%, Dog: 100%, Guinea Pig: 93%, Horse: 100%, Human: 100%, Mouse: 86%, Pig: 100%, Rat: 79%, Zebrafish: 92%
Characteristics:	This is a rabbit polyclonal antibody against SIN3B. It was validated on Western Blot using a cell lysate as a positive control.
Purification:	Affinity Purified

Target Details

Target:	SIN3B
Alternative Name:	SIN3B (SIN3B Products)

Target Details

Background:	<p>SIN3B acts as a transcriptional repressor. It interacts with MXI1 to repress MYC responsive genes and antagonize MYC oncogenic activities. Also, it interacts with MAD-MAX heterodimers by binding to MAD. The heterodimer then represses transcription by tethering SIN3B to DNA.</p> <p>The gene is also able to form a complex with FOXK1 which represses transcription</p> <p>Alias Symbols: KIAA0700</p> <p>Protein Interaction Partner: SOX2, HDAC1, HDAC2, UBC, ESR1, AR, TFAP4, TP53, SUMO2, KLF16, MORF4L1, MORF4L2, MRGBP, KDM5A, CIITA, NR1D2, COPS2, SMN1, PBX1, REST, ZBTB4, ARID4A, MYT1, MXI1, SAP25, SMARCE1, SMARCB1, SMARCA4, SMARCA2, CBFA2T3, RNF220, ZBTB16, SETDB1, HDAC9, IKZF4, IKZF1</p> <p>Protein Size: 1162</p>
Molecular Weight:	133 kDa
Gene ID:	23309
NCBI Accession:	NM_015260 , NP_056075
UniProt:	O75182

Application Details

Application Notes:	Optimal working dilutions should be determined experimentally by the investigator.
Comment:	Antigen size: 1162 AA
Restrictions:	For Research Use only

Handling

Format:	Liquid
Concentration:	Lot specific
Buffer:	Liquid. Purified antibody supplied in 1x PBS buffer with 0.09 % (w/v) sodium azide and 2 % sucrose.
Preservative:	Sodium azide
Precaution of Use:	This product contains Sodium azide: a POISONOUS AND HAZARDOUS SUBSTANCE which should be handled by trained staff only.
Handling Advice:	Avoid repeated freeze-thaw cycles.
Storage:	-20 °C

Handling

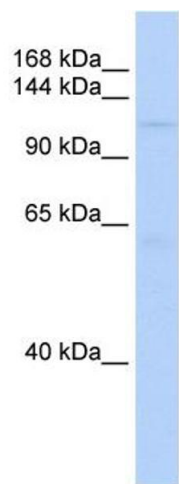
Storage Comment: For short term use, store at 2-8°C up to 1 week. For long term storage, store at -20°C in small aliquots to prevent freeze-thaw cycles.

Publications

Product cited in: Aubol, Wu, Keshwani, Movassat, Fattet, Hertel, Fu, Adams: "Release of SR Proteins from CLK1 by SRPK1: A Symbiotic Kinase System for Phosphorylation Control of Pre-mRNA Splicing." in: **Molecular cell**, Vol. 63, Issue 2, pp. 218-228, (2016) ([PubMed](#)).

Eisenreich, Zakrzewicz, Huber, Thierbach, Pepke, Goldin-Lang, Schultheiss, Pries, Rauch: "Regulation of pro-angiogenic tissue factor expression in hypoxia-induced human lung cancer cells." in: **Oncology reports**, Vol. 30, Issue 1, pp. 462-70, (2013) ([PubMed](#)).

Images



Western Blotting

Image 1. WB Suggested Anti-SIN3B Antibody Titration: 0.2-1 ug/ml ELISA Titer: 1:62500 Positive Control: HCT15 cell lysate