

Datasheet for ABIN2784252
anti-MBTD1 antibody (Middle Region)[Go to Product page](#)

1 Image

Overview

Quantity:	100 µL
Target:	MBTD1
Binding Specificity:	Middle Region
Reactivity:	Human, Mouse, Cow, Dog, Guinea Pig, Horse, Rabbit, Rat
Host:	Rabbit
Clonality:	Polyclonal
Conjugate:	This MBTD1 antibody is un-conjugated
Application:	Western Blotting (WB)

Product Details

Sequence:	LVPVRTVQHK YTNWKAFLVK RLTGAKTLPP DFSQKVSESM QYPFKPCMRV
Predicted Reactivity:	Cow: 100%, Dog: 100%, Guinea Pig: 100%, Horse: 100%, Human: 100%, Mouse: 100%, Rabbit: 100%, Rat: 100%
Characteristics:	This is a rabbit polyclonal antibody against Mbtd1. It was validated on Western Blot.
Purification:	Affinity Purified

Target Details

Target:	MBTD1
Alternative Name:	Mbtd1 (MBTD1 Products)
Background:	Mbtd1 is a putative Polycomb group (PcG) protein. PcG proteins maintain the transcriptionally

Target Details

repressive state of genes, probably via a modification of chromatin, rendering it heritably changed in its expressibility. It specifically binds to monomethylated and dimethylated 'Lys-20' on histone H4.

Alias Symbols: AA408199, AI194990, hemp

Protein Interaction Partner: Nanog, Ep400, Rnf2,

Protein Size: 631

Molecular Weight: 71 kDa

Gene ID: 103537

NCBI Accession: [NM_134012](#), [NP_598773](#)

UniProt: [Q6P5G3](#)

Application Details

Application Notes: Optimal working dilutions should be determined experimentally by the investigator.

Comment: Antigen size: 631 AA

Restrictions: For Research Use only

Handling

Format: Liquid

Concentration: Lot specific

Buffer: Liquid. Purified antibody supplied in 1x PBS buffer with 0.09 % (w/v) sodium azide and 2 % sucrose.

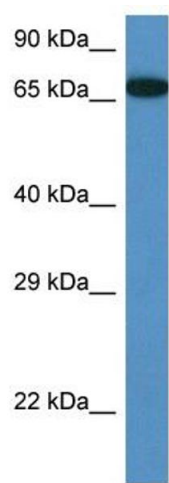
Preservative: Sodium azide

Precaution of Use: This product contains Sodium azide: a POISONOUS AND HAZARDOUS SUBSTANCE which should be handled by trained staff only.

Handling Advice: Avoid repeated freeze-thaw cycles.

Storage: -20 °C

Storage Comment: For short term use, store at 2-8°C up to 1 week. For long term storage, store at -20°C in small aliquots to prevent freeze-thaw cycles.



Western Blotting

Image 1. WB Suggested Anti-Mbtd1 Antibody Titration: 1.0 ug/ml Positive Control: Mouse Pancreas