

Datasheet for ABIN2784253
anti-MBTD1 antibody (N-Term)[Go to Product page](#)

1 Image

Overview

Quantity:	100 µL
Target:	MBTD1
Binding Specificity:	N-Term
Reactivity:	Human, Mouse, Cow, Dog, Guinea Pig, Horse, Rabbit, Rat, Saccharomyces cerevisiae, Zebrafish (Danio rerio)
Host:	Rabbit
Clonality:	Polyclonal
Application:	Western Blotting (WB)

Product Details

Immunogen:	The immunogen is a synthetic peptide directed towards the N-terminal region of Human MBTD1
Sequence:	PFKPCMRVEV VDKRHLCTR VAVVESVIGG RLRLVYEESE DRTDDFWCHM
Predicted Reactivity:	Cow: 100%, Dog: 100%, Guinea Pig: 100%, Horse: 100%, Human: 100%, Mouse: 100%, Rabbit: 100%, Rat: 100%, Yeast: 83%, Zebrafish: 86%
Characteristics:	This is a rabbit polyclonal antibody against MBTD1. It was validated on Western Blot.
Purification:	Affinity Purified

Target Details

Target:	MBTD1
Alternative Name:	MBTD1 (MBTD1 Products)

Target Details

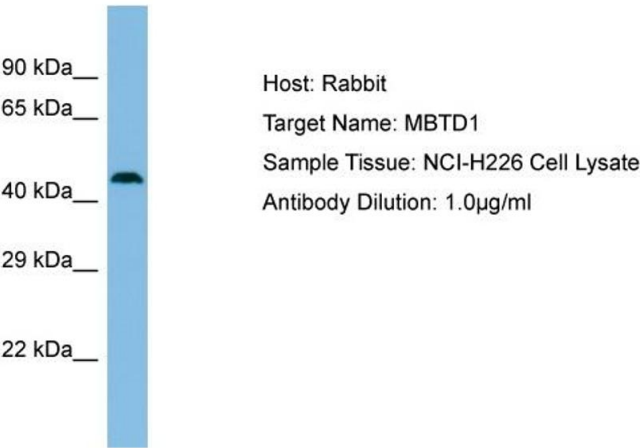
Background:	<p>MBTD1 is a putative Polycomb group (PcG) protein. PcG proteins maintain the transcriptionally repressive state of genes, probably via a modification of chromatin, rendering it heritably changed in its expressibility. It is specifically binds to monomethylated and dimethylated 'Lys-20' on histone H4.</p> <p>Protein Interaction Partner: COPS6, SUMO2, MRGBP, MORF4L1, MORF4L2,</p> <p>Protein Size: 410</p>
Molecular Weight:	45 kDa
Gene ID:	54799

Application Details

Restrictions:	For Research Use only
---------------	-----------------------

Handling

Format:	Liquid
Concentration:	1 mg/mL
Buffer:	Liquid. Purified antibody supplied in 1x PBS buffer with 0.09 % (w/v) sodium azide and 2 % sucrose.
Preservative:	Sodium azide
Precaution of Use:	This product contains Sodium azide: a POISONOUS AND HAZARDOUS SUBSTANCE which should be handled by trained staff only.
Handling Advice:	Avoid repeat freeze-thaw cycles.
Storage:	-20 °C
Storage Comment:	For short term use, store at 2-8°C up to 1 week. For long term storage, store at -20°C in small aliquots to prevent freeze-thaw cycles.



Western Blotting

Image 1. Host: Rabbit Target Name: MBTD1 Sample Type: NCI-H226 Whole Cell lysates Antibody Dilution: 1.0ug/ml MBTD1 is supported by BioGPS gene expression data to be expressed in NCIH226