



[Go to Product page](#)

Datasheet for ABIN2784266

anti-SMYD2A antibody (Middle Region)

3 Images

1 Publication

Overview

Quantity:	100 µL
Target:	SMYD2A
Binding Specificity:	Middle Region
Reactivity:	Human, Mouse, Rat, Cow, Dog, Horse, Rabbit, Guinea Pig, Pig, Zebrafish (Danio rerio)
Host:	Rabbit
Clonality:	Polyclonal
Conjugate:	This SMYD2A antibody is un-conjugated
Application:	Western Blotting (WB), Chromatin Immunoprecipitation (ChIP)

Product Details

Immunogen:	The immunogen is a synthetic peptide directed towards the middle region of human SMYD2
Sequence:	SMWLKLGRLY MGLEHKAAGE KALKKAIAIM EVAHGKDHPY ISEIKQEIES
Predicted Reactivity:	Cow: 100%, Dog: 100%, Guinea Pig: 93%, Horse: 100%, Human: 100%, Mouse: 100%, Pig: 100%, Rabbit: 100%, Rat: 100%, Zebrafish: 86%
Characteristics:	This is a rabbit polyclonal antibody against SMYD2. It was validated on Western Blot using a cell lysate as a positive control.
Purification:	Affinity Purified

Target Details

Target:	SMYD2A
---------	--------

Target Details

Alternative Name:	SMYD2 (SMYD2A Products)
Background:	<p>The specific function of this protein remains unknown.SET domain-containing proteins, such as SMYD2, catalyze lysine methylation (Brown et al., 2006 [PubMed 16805913]).[supplied by OMIM].</p> <p>Alias Symbols: HSKM-B, KMT3C, MGC119305, ZMYND14</p> <p>Protein Interaction Partner: UBC, HIST2H3C, HSP90AA1, RB1, EPB41L3, TP53, CLASP2, AKAP11, CDC37, IGF2BP1, AXIN1, GSK3B,</p> <p>Protein Size: 433</p>
Molecular Weight:	50 kDa
Gene ID:	56950
NCBI Accession:	NM_020197 , NP_064582
UniProt:	Q9NRG4

Application Details

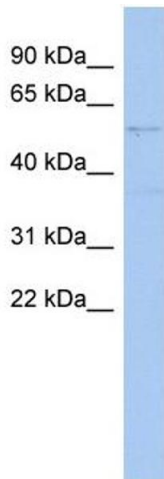
Application Notes:	Optimal working dilutions should be determined experimentally by the investigator.
Comment:	Antigen size: 433 AA
Restrictions:	For Research Use only

Handling

Format:	Liquid
Concentration:	Lot specific
Buffer:	Liquid. Purified antibody supplied in 1x PBS buffer with 0.09 % (w/v) sodium azide and 2 % sucrose.
Preservative:	Sodium azide
Precaution of Use:	This product contains Sodium azide: a POISONOUS AND HAZARDOUS SUBSTANCE which should be handled by trained staff only.
Handling Advice:	Avoid repeated freeze-thaw cycles.
Storage:	-20 °C
Storage Comment:	For short term use, store at 2-8°C up to 1 week. For long term storage, store at -20°C in small aliquots to prevent freeze-thaw cycles.

Product cited in: Ewing, Chu, Elisma, Li, Taylor, Climie, McBroom-Cerajewski, Robinson, OConnor, Li, Taylor, Dharsee, Ho, Heilbut, Moore, Zhang, Ornatsky, Bukhman, Ethier, Sheng, Vasilescu, Abu-Farha, Lambert, Duewel et al.: "Large-scale mapping of human protein-protein interactions by mass spectrometry. ..." in: **Molecular systems biology**, Vol. 3, pp. 89, (2007) ([PubMed](#)).

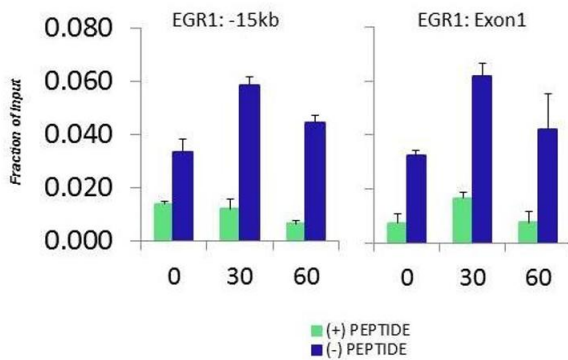
Images



Western Blotting

Image 1. WB Suggested Anti-SMYD2 Antibody Titration: 0.2-1 ug/ml ELISA Titer: 1:312500 Positive Control: SH-SY5Y cell lysate SMYD2 is supported by BioGPS gene expression data to be expressed in SHSY5Y

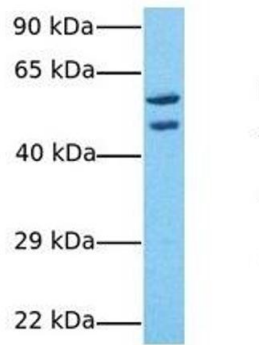
**HCT116 serum response
SMYD2
Matrix-ChIP**



Chromatin Immunoprecipitation

Image 2. Quiescent human colon carcinoma HCT116 cultures were treated with 10% FBS for three time points (0, 15, 30min) or (0, 30, 60min) were used in Matrix-ChIP and real-time PCR assays at EGR1 gene (Exon1) and 15kb upstream site.

SMYD2



Western Blotting

Image 3. Host: Rabbit Target Name: SMYD2 Sample Tissue:
Human 293T Antibody Dilution: 1.0ug/ml