

Datasheet for ABIN2784272
anti-KIAA1627 antibody (N-Term)[Go to Product page](#)

2 Images

Overview

Quantity:	100 µL
Target:	KIAA1627
Binding Specificity:	N-Term
Reactivity:	Human, Rat, Mouse, Pig, Rabbit, Cow, Zebrafish (Danio rerio), Dog, Horse
Host:	Rabbit
Clonality:	Polyclonal
Conjugate:	This KIAA1627 antibody is un-conjugated
Application:	Western Blotting (WB)

Product Details

Immunogen:	The immunogen is a synthetic peptide directed towards the N terminal region of human KIAA1627
Sequence:	LNSKDEQREI AETRETCRAS YDTSAPNAKR KYLDEGETDE DKMEEYKDEL
Predicted Reactivity:	Cow: 100%, Dog: 100%, Horse: 100%, Human: 100%, Mouse: 100%, Pig: 100%, Rabbit: 100%, Rat: 100%, Zebrafish: 86%
Characteristics:	This is a rabbit polyclonal antibody against KIAA1627. It was validated on Western Blot using a cell lysate as a positive control.
Purification:	Affinity Purified

Target Details

Target:	KIAA1627
---------	----------

Target Details

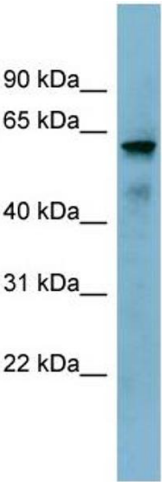
Abstract:	KIAA1627 Products
Background:	KIAA1627 is a probable methyltransferase. Protein Interaction Partner: UBC, METTL3, SNX15, SNF8, Protein Size: 456
Molecular Weight:	52 kDa
Gene ID:	57721
NCBI Accession:	NM_020961 , NP_066012
UniProt:	Q9HCE5

Application Details

Application Notes:	Optimal working dilutions should be determined experimentally by the investigator.
Comment:	Antigen size: 456 AA
Restrictions:	For Research Use only

Handling

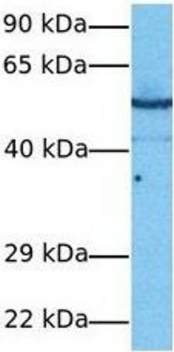
Format:	Liquid
Concentration:	Lot specific
Buffer:	Liquid. Purified antibody supplied in 1x PBS buffer with 0.09 % (w/v) sodium azide and 2 % sucrose.
Preservative:	Sodium azide
Precaution of Use:	This product contains Sodium azide: a POISONOUS AND HAZARDOUS SUBSTANCE which should be handled by trained staff only.
Handling Advice:	Avoid repeated freeze-thaw cycles.
Storage:	-20 °C
Storage Comment:	For short term use, store at 2-8°C up to 1 week. For long term storage, store at -20°C in small aliquots to prevent freeze-thaw cycles.



Western Blotting

Image 1. WB Suggested Anti-KIAA1627 Antibody Titration: 0.2-1 ug/ml ELISA Titer: 1:1562500 Positive Control: NCI-H226 cell lysate

KIAA1627



Western Blotting

Image 2. Host: Rabbit Target Name: KIAA1627 Sample Tissue: Human PANC1 Antibody Dilution: 1.0ug/ml