

Datasheet for ABIN2784274
anti-ZNF625 antibody (Middle Region)[Go to Product page](#)

1 Image

Overview

Quantity:	100 µL
Target:	ZNF625
Binding Specificity:	Middle Region
Reactivity:	Human, Horse
Host:	Rabbit
Clonality:	Polyclonal
Conjugate:	This ZNF625 antibody is un-conjugated
Application:	Western Blotting (WB)

Product Details

Immunogen:	The immunogen is a synthetic peptide directed towards the middle region of Human ZNF625
Sequence:	VGHASLNRHH RADTGHKPYE YQEYGQKPYK CTYCKKAFSD LPYFRTHEWA
Predicted Reactivity:	Horse: 85%, Human: 100%
Characteristics:	This is a rabbit polyclonal antibody against ZNF625. It was validated on Western Blot.
Purification:	Affinity Purified

Target Details

Target:	ZNF625
Alternative Name:	ZNF625 (ZNF625 Products)
Background:	ZNF625 may be involved in transcriptional regulation.

Target Details

Protein Interaction Partner: KRTAP10-3, KRTAP10-9, KRTAP10-7, KRTAP10-4, KRT40, CBX5, UBC,
Protein Size: 306

Molecular Weight: 33 kDa

Gene ID: 90589

UniProt: [Q96I27](#)

Application Details

Application Notes: Optimal working dilution should be determined by the investigator.

Restrictions: For Research Use only

Handling

Format: Liquid

Concentration: 1 mg/mL

Buffer: Liquid. Purified antibody supplied in 1x PBS buffer with 0.09 % (w/v) sodium azide and 2 % sucrose.

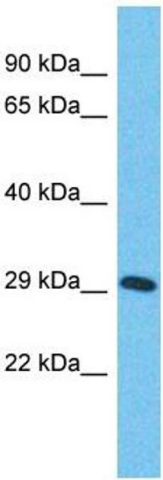
Preservative: Sodium azide

Precaution of Use: This product contains Sodium azide: a POISONOUS AND HAZARDOUS SUBSTANCE which should be handled by trained staff only.

Handling Advice: Avoid repeat freeze-thaw cycles.

Storage: -20 °C

Storage Comment: For short term use, store at 2-8°C up to 1 week. For long term storage, store at -20°C in small aliquots to prevent freeze-thaw cycles.



Western Blotting

Image 1. Host: Rabbit Target Name: ZNF625 Sample Type: Stomach Tumor lysates Antibody Dilution: 1.0ug/ml