

Datasheet for ABIN2784279
anti-CTBP2 antibody (C-Term)

5 Images

[Go to Product page](#)

Overview

Quantity:	100 µL
Target:	CTBP2
Binding Specificity:	C-Term
Reactivity:	Human, Mouse, Rat, Cow, Dog, Goat, Guinea Pig, Horse, Rabbit
Host:	Rabbit
Clonality:	Polyclonal
Application:	Western Blotting (WB), Immunohistochemistry (IHC)

Product Details

Immunogen:	The immunogen is a synthetic peptide directed towards the C terminal region of human CTBP2
Sequence:	TGRIPESLRN CVNKEFFVTS APWSVIDQQA IHPELNGATY RYPPGIVGVA
Predicted Reactivity:	Cow: 100%, Dog: 100%, Goat: 86%, Guinea Pig: 100%, Horse: 93%, Human: 100%, Mouse: 100%, Rabbit: 100%, Rat: 100%
Characteristics:	This is a rabbit polyclonal antibody against CTBP2. It was validated on Western Blot using a cell lysate as a positive control.
Purification:	Affinity Purified

Target Details

Target:	CTBP2
Alternative Name:	CTBP2 (CTBP2 Products)

Target Details

Background:	<p>This gene produces alternative transcripts encoding two distinct proteins. One protein is a transcriptional repressor, while the other isoform is a major component of specialized synapses known as synaptic ribbons. Both proteins contain a NAD⁺ binding domain similar to NAD⁺-dependent 2-hydroxyacid dehydrogenases. A portion of the 3' untranslated region was used to map this gene to chromosome 21q21.3, however, it was noted that similar loci elsewhere in the genome are likely. This gene produces alternative transcripts encoding two distinct proteins. One protein is a transcriptional repressor, while the other isoform is a major component of specialized synapses known as synaptic ribbons. Both proteins contain a NAD⁺ binding domain similar to NAD⁺-dependent 2-hydroxyacid dehydrogenases. A portion of the 3' untranslated region was used to map this gene to chromosome 21q21.3, however, it was noted that similar loci elsewhere in the genome are likely. Blast analysis shows that this gene is present on chromosome 10.</p> <p>Alias Symbols: -</p> <p>Protein Interaction Partner: NOL4, TGIF1, HOXB5, NOL4L, FUNDC1, FOXP2, RIMBP3, LCOR, ZNF750, DMRTB1, TSHZ3, BCAS3, BAZ2B, PLCB1, IKZF2, RAI2, ZBTB18, IKZF1, CTBP1, FLI1, SUMO2, SUMO3, SPRTN, SMAD6, UBC, SUMO1, NEDD8, TRNT1, DDX19B, SGTA, DYRK1B, NRIP1, ZNF512B, C15orf39, CTPS2, PPP1R</p> <p>Protein Size: 985</p>
-------------	--

Molecular Weight:	106 kDa
-------------------	---------

Gene ID:	1488
----------	------

NCBI Accession:	NM_022802 , NP_073713
-----------------	---

UniProt:	P56545
----------	------------------------

Application Details

Application Notes:	Optimal working dilutions should be determined experimentally by the investigator.
--------------------	--

Comment:	Antigen size: 985 AA
----------	----------------------

Restrictions:	For Research Use only
---------------	-----------------------

Handling

Format:	Liquid
---------	--------

Concentration:	Lot specific
----------------	--------------

Buffer:	Liquid. Purified antibody supplied in 1x PBS buffer with 0.09 % (w/v) sodium azide and 2 %
---------	--

Handling

	sucrose.
Preservative:	Sodium azide
Precaution of Use:	This product contains Sodium azide: a POISONOUS AND HAZARDOUS SUBSTANCE which should be handled by trained staff only.
Handling Advice:	Avoid repeated freeze-thaw cycles.
Storage:	-20 °C
Storage Comment:	For short term use, store at 2-8°C up to 1 week. For long term storage, store at -20°C in small aliquots to prevent freeze-thaw cycles.

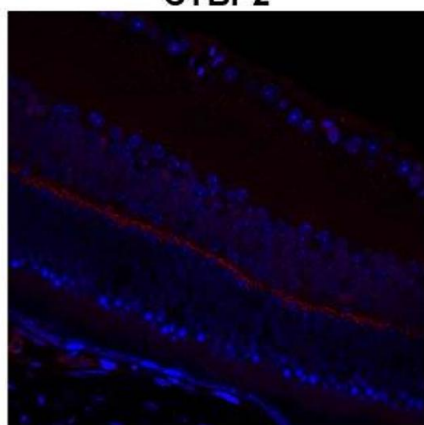
Images



Western Blotting

Image 1. WB Suggested Anti-CTBP2 Antibody Titration: 0.2-1 ug/ml Positive Control: Hela cell lysate CTBP2 is strongly supported by BioGPS gene expression data to be expressed in Human HeLa cells

CTBP2



See Immunohistochemistry 1 Data for more information.

Immunohistochemistry

Image 2. Sample Type: complete mouse retina sections

Red: Primary

Blue: DAPI

Primary Dilution: 1:200

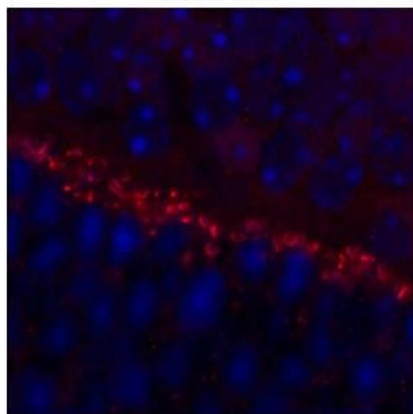
Secondary Antibody: Goat anti-Rabbit AF568 IgG(H+L)

Secondary Dilution: 1:200

Image Submitted by: David Zenisek

Yale University

CTBP2



See Immunohistochemistry 2 Data for more information.

Immunohistochemistry

Image 3. Sample Type: outer mouse plexiform layer

Red: Primary

Blue: DAPI

Primary Dilution: 1:200

Secondary Antibody: Goat anti-Rabbit AF568 IgG(H+L)

Secondary Dilution: 1:200

Image Submitted by: David Zenisek

Yale University

Please check the [product details page](#) for more images. Overall 5 images are available for ABIN2784279.