

Datasheet for ABIN2784283
anti-OCEL1 antibody (C-Term)[Go to Product page](#)[1 Image](#)[1 Publication](#)

Overview

Quantity:	100 µL
Target:	OCEL1
Binding Specificity:	C-Term
Reactivity:	Human, Rat, Cow, Dog, Guinea Pig, Horse, Pig
Host:	Rabbit
Clonality:	Polyclonal
Conjugate:	This OCEL1 antibody is un-conjugated
Application:	Western Blotting (WB)

Product Details

Immunogen:	The immunogen is a synthetic peptide directed towards the C terminal region of human OCEL1
Sequence:	VWREFEMKRM DPGFLDKQAR CHYLKGKLRH LKTQIQKFDD QGDSEGSVYF
Predicted Reactivity:	Cow: 100%, Dog: 79%, Guinea Pig: 86%, Horse: 86%, Human: 100%, Pig: 93%, Rat: 93%
Characteristics:	This is a rabbit polyclonal antibody against OCEL1. It was validated on Western Blot using a cell lysate as a positive control.
Purification:	Affinity Purified

Target Details

Target:	OCEL1
Alternative Name:	OCEL1 (OCEL1 Products)

Target Details

Background: OCEL1 belongs to the ELL/occludin family. The exact functions of OCEL1 remain unknown.
Alias Symbols: FLJ22709, FWP009, S863-9
Protein Interaction Partner: SRPK2, SRPK1, APP,
Protein Size: 264

Molecular Weight: 29 kDa

Gene ID: 79629

NCBI Accession: [NM_024578](#), [NP_078854](#)

UniProt: [Q9H607](#)

Application Details

Application Notes: Optimal working dilutions should be determined experimentally by the investigator.

Comment: Antigen size: 264 AA

Restrictions: For Research Use only

Handling

Format: Liquid

Concentration: Lot specific

Buffer: Liquid. Purified antibody supplied in 1x PBS buffer with 0.09 % (w/v) sodium azide and 2 % sucrose.

Preservative: Sodium azide

Precaution of Use: This product contains Sodium azide: a POISONOUS AND HAZARDOUS SUBSTANCE which should be handled by trained staff only.

Handling Advice: Avoid repeated freeze-thaw cycles.

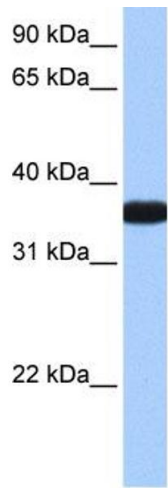
Storage: -20 °C

Storage Comment: For short term use, store at 2-8°C up to 1 week. For long term storage, store at -20°C in small aliquots to prevent freeze-thaw cycles.

Publications

Product cited in: Collins, Wright, Edwards, Davis, Grinham, Cole, Goward, Aguado, Mallya, Mokrab, Huckle, Beare, Dunham: "A genome annotation-driven approach to cloning the human ORFeome." in: **Genome**

Validation report #100034 for Immunohistochemistry (IHC)



Western Blotting

Image 1. WB Suggested Anti-OCEL1 Antibody Titration: 0.2-1 ug/ml Positive Control: Human lung