

Datasheet for ABIN2784289

anti-Cyclin L2 antibody (N-Term)[Go to Product page](#)**1** Image

Overview

Quantity:	100 µL
Target:	Cyclin L2 (CCNL2)
Binding Specificity:	N-Term
Reactivity:	Human, Rat, Mouse, Dog, Cow, Guinea Pig, Horse, Rabbit, Zebrafish (Danio rerio)
Host:	Rabbit
Clonality:	Polyclonal
Conjugate:	This Cyclin L2 antibody is un-conjugated
Application:	Western Blotting (WB)

Product Details

Immunogen:	The immunogen is a synthetic peptide directed towards the N terminal region of human CCNL2
Sequence:	TGQVLFQRFF YTKSFVKHSM EHVSMACVHL ASKIEEAPRR IRDVINVFHR
Predicted Reactivity:	Cow: 100%, Dog: 100%, Guinea Pig: 100%, Horse: 100%, Human: 100%, Mouse: 100%, Rabbit: 100%, Rat: 100%, Zebrafish: 93%
Characteristics:	This is a rabbit polyclonal antibody against CCNL2. It was validated on Western Blot using a cell lysate as a positive control.
Purification:	Affinity Purified

Target Details

Target:	Cyclin L2 (CCNL2)
---------	-------------------

Target Details

Alternative Name:	CCNL2 (CCNL2 Products)
Background:	<p>CCNL2 belongs to the cyclin family, Cyclin L subfamily. CCNL2 is a transcriptional regulator which participates in regulating the pre-mRNA splicing process. CCNL2 also modulates the expression of critical apoptotic factor, leading to cell apoptosis.</p> <p>Alias Symbols: ANIA-6B, DKFZp761A1210, DKFZp762O195, HCLA-ISO, HLA-ISO, PCEE, SB138, CCNM</p> <p>Protein Interaction Partner: RUNDC3A, CSNK2A2, DYRK1A, SRSF7, POLR2A, CDK11B, SRSF2, CDK11A,</p> <p>Protein Size: 226</p>
Molecular Weight:	24 kDa
Gene ID:	81669
NCBI Accession:	NM_001039577 , NP_001034666
UniProt:	Q96S94

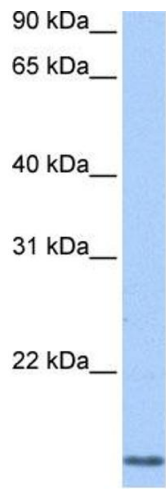
Application Details

Application Notes:	Optimal working dilutions should be determined experimentally by the investigator.
Comment:	Antigen size: 226 AA
Restrictions:	For Research Use only

Handling

Format:	Liquid
Concentration:	Lot specific
Buffer:	Liquid. Purified antibody supplied in 1x PBS buffer with 0.09 % (w/v) sodium azide and 2 % sucrose.
Preservative:	Sodium azide
Precaution of Use:	This product contains Sodium azide: a POISONOUS AND HAZARDOUS SUBSTANCE which should be handled by trained staff only.
Handling Advice:	Avoid repeated freeze-thaw cycles.
Storage:	-20 °C
Storage Comment:	For short term use, store at 2-8°C up to 1 week. For long term storage, store at -20°C in small

aliquots to prevent freeze-thaw cycles.



Western Blotting

Image 1. WB Suggested Anti-CCNL2 Antibody Titration: 0.2-1 ug/ml Positive Control: Jurkat cell lysate CCNL2 is supported by BioGPS gene expression data to be expressed in Jurkat