



Datasheet for ABIN2784296

anti-PHF20L1 antibody (N-Term)



[Go to Product page](#)

1 Image

1 Publication

Overview

Quantity:	100 µL
Target:	PHF20L1
Binding Specificity:	N-Term
Reactivity:	Human, Rat, Mouse, Dog, Cow, Horse, Guinea Pig, Pig, Rabbit, Zebrafish (Danio rerio)
Host:	Rabbit
Clonality:	Polyclonal
Conjugate:	This PHF20L1 antibody is un-conjugated
Application:	Western Blotting (WB)

Product Details

Immunogen:	The immunogen is a synthetic peptide directed towards the N terminal region of human PHF20L1
Sequence:	AAKNKTGSKP RTSANSNKDK DKDERKWFKV PSKKEETSTC IATPDVEKKE
Predicted Reactivity:	Cow: 93%, Dog: 86%, Guinea Pig: 86%, Horse: 86%, Human: 100%, Mouse: 77%, Pig: 93%, Rabbit: 93%, Rat: 86%, Zebrafish: 82%
Characteristics:	This is a rabbit polyclonal antibody against PHF20L1. It was validated on Western Blot using a cell lysate as a positive control.
Purification:	Affinity Purified

Target Details

Target:	PHF20L1
---------	---------

Target Details

Alternative Name:	PHF20L1 (PHF20L1 Products)
Background:	The exact function of PHF20L1 remains unknown. Alias Symbols: CGI-72, MGC64923 Protein Interaction Partner: ZNF471, KDM1A, TERT, LYAR, WWP1, UBC, ELAVL4, CASP10, APP, Kat8, Protein Size: 573
Molecular Weight:	63 kDa
Gene ID:	51105
NCBI Accession:	NM_032205 , NP_115581
UniProt:	A8MW92

Application Details

Application Notes:	Optimal working dilutions should be determined experimentally by the investigator.
Comment:	Antigen size: 573 AA
Restrictions:	For Research Use only

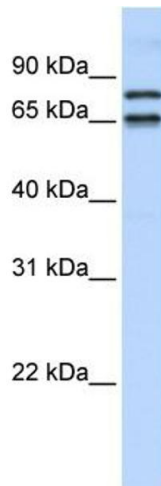
Handling

Format:	Liquid
Concentration:	Lot specific
Buffer:	Liquid. Purified antibody supplied in 1x PBS buffer with 0.09 % (w/v) sodium azide and 2 % sucrose.
Preservative:	Sodium azide
Precaution of Use:	This product contains Sodium azide: a POISONOUS AND HAZARDOUS SUBSTANCE which should be handled by trained staff only.
Handling Advice:	Avoid repeated freeze-thaw cycles.
Storage:	-20 °C
Storage Comment:	For short term use, store at 2-8°C up to 1 week. For long term storage, store at -20°C in small aliquots to prevent freeze-thaw cycles.

Publications

Product cited in: Ewing, Chu, Elisma, Li, Taylor, Climie, McBroom-Cerajewski, Robinson, OConnor, Li, Taylor, Dharsee, Ho, Heilbut, Moore, Zhang, Ornatsky, Bukhman, Ethier, Sheng, Vasilescu, Abu-Farha, Lambert, Duewel et al.: "Large-scale mapping of human protein-protein interactions by mass spectrometry. ..." in: **Molecular systems biology**, Vol. 3, pp. 89, (2007) ([PubMed](#)).

Images



Western Blotting

Image 1. WB Suggested Anti-PHF20L1 Antibody Titration: 0.2-1 ug/ml ELISA Titer: 1:62500 Positive Control: 721_B cell lysate PHF20L1 is supported by BioGPS gene expression data to be expressed in 721_B