

Datasheet for ABIN2784309
anti-SCRT2 antibody (Middle Region)[Go to Product page](#)

1 Image

Overview

Quantity:	100 µL
Target:	SCRT2
Binding Specificity:	Middle Region
Reactivity:	Human, Guinea Pig, Rat, Dog, Saccharomyces cerevisiae
Host:	Rabbit
Clonality:	Polyclonal
Conjugate:	This SCRT2 antibody is un-conjugated
Application:	Western Blotting (WB)

Product Details

Immunogen:	The immunogen is a synthetic peptide directed towards the middle region of human SCRT2
Sequence:	HMQTHSAFKH YRCRQCDKSF ALKSYLHKHC EAACAKAAEP PPPTPAGPAS
Predicted Reactivity:	Dog: 92%, Guinea Pig: 79%, Human: 100%, Rat: 85%, Yeast: 100%
Characteristics:	This is a rabbit polyclonal antibody against SCRT2. It was validated on Western Blot using a cell lysate as a positive control.
Purification:	Affinity Purified

Target Details

Target:	SCRT2
Alternative Name:	SCRT2 (SCRT2 Products)

Target Details

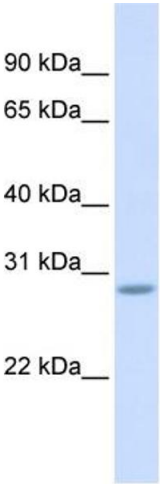
Background:	SCRT2 belongs to the snail C2H2-type zinc-finger protein family. It contains 5 C2H2-type zinc fingers. SCRT2 may be involved in transcriptional regulation. Alias Symbols: ZNF898B Protein Size: 307
Molecular Weight:	32 kDa
Gene ID:	85508
NCBI Accession:	NM_033129 , NP_149120
UniProt:	Q9NQ03

Application Details

Application Notes:	Optimal working dilutions should be determined experimentally by the investigator.
Comment:	Antigen size: 307 AA
Restrictions:	For Research Use only

Handling

Format:	Liquid
Concentration:	Lot specific
Buffer:	Liquid. Purified antibody supplied in 1x PBS buffer with 0.09 % (w/v) sodium azide and 2 % sucrose.
Preservative:	Sodium azide
Precaution of Use:	This product contains Sodium azide: a POISONOUS AND HAZARDOUS SUBSTANCE which should be handled by trained staff only.
Handling Advice:	Avoid repeated freeze-thaw cycles.
Storage:	-20 °C
Storage Comment:	For short term use, store at 2-8°C up to 1 week. For long term storage, store at -20°C in small aliquots to prevent freeze-thaw cycles.



Western Blotting

Image 1. WB Suggested Anti-SCRT2 Antibody Titration:
0.2-1 ug/ml ELISA Titer: 1:62500 Positive Control: Human
Muscle