

Datasheet for ABIN2784316
anti-ZNF618 antibody (N-Term)[Go to Product page](#)

1 Image

Overview

Quantity:	100 µL
Target:	ZNF618
Binding Specificity:	N-Term
Reactivity:	Human, Rat, Cow, Mouse, Rabbit, Dog, Guinea Pig, Horse
Host:	Rabbit
Clonality:	Polyclonal
Conjugate:	This ZNF618 antibody is un-conjugated
Application:	Western Blotting (WB)

Product Details

Immunogen:	The immunogen is a synthetic peptide directed towards the N terminal region of human ZNF618
Sequence:	TLGSYECGIC GK KYKYNCF QTHVRAHRDT EATSGEGASQ SNNFRYTCDI
Predicted Reactivity:	Cow: 100%, Dog: 100%, Guinea Pig: 100%, Horse: 100%, Human: 100%, Mouse: 93%, Rabbit: 100%, Rat: 100%
Characteristics:	This is a rabbit polyclonal antibody against ZNF618. It was validated on Western Blot using a cell lysate as a positive control.
Purification:	Affinity Purified

Target Details

Target:	ZNF618
---------	--------

Target Details

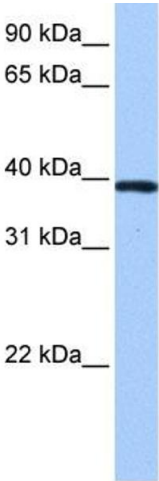
Alternative Name:	ZNF618 (ZNF618 Products)
Background:	<p>ZNF618 belongs to the krueppel C2H2-type zinc-finger protein family. It contains 4 C2H2-type zinc fingers. ZNF618 may be involved in transcriptional regulation.</p> <p>Alias Symbols: RP11-56P10.2, FP13169, NEDD10</p> <p>Protein Interaction Partner: CSNK1A1,</p> <p>Protein Size: 375</p>
Molecular Weight:	41 kDa
Gene ID:	114991
NCBI Accession:	NM_133374
UniProt:	Q5T7W0

Application Details

Application Notes:	Optimal working dilutions should be determined experimentally by the investigator.
Comment:	Antigen size: 375 AA
Restrictions:	For Research Use only

Handling

Format:	Liquid
Concentration:	Lot specific
Buffer:	Liquid. Purified antibody supplied in 1x PBS buffer with 0.09 % (w/v) sodium azide and 2 % sucrose.
Preservative:	Sodium azide
Precaution of Use:	This product contains Sodium azide: a POISONOUS AND HAZARDOUS SUBSTANCE which should be handled by trained staff only.
Handling Advice:	Avoid repeated freeze-thaw cycles.
Storage:	-20 °C
Storage Comment:	For short term use, store at 2-8°C up to 1 week. For long term storage, store at -20°C in small aliquots to prevent freeze-thaw cycles.



Western Blotting

Image 1. WB Suggested Anti-ZNF618 Antibody Titration:
0.2-1 ug/ml Positive Control: NTERA2 cell lysate