

Datasheet for ABIN2784320
anti-URI1 antibody (Middle Region)

6 Images

[Go to Product page](#)

Overview

Quantity:	100 µL
Target:	URI1
Binding Specificity:	Middle Region
Reactivity:	Human, Mouse, Rat, Dog, Cow, Horse, Rabbit, Guinea Pig
Host:	Rabbit
Clonality:	Polyclonal
Conjugate:	This URI1 antibody is un-conjugated
Application:	Western Blotting (WB)

Product Details

Immunogen:	The immunogen is a synthetic peptide directed towards the middle region of human C19orf2
Sequence:	NGEYVPRKSI LKSRSENSV CSDTSESSAA EFDDRRGVLR SISCEEATCS
Predicted Reactivity:	Cow: 93%, Dog: 86%, Guinea Pig: 93%, Horse: 86%, Human: 100%, Mouse: 79%, Rabbit: 100%, Rat: 80%
Characteristics:	This is a rabbit polyclonal antibody against C19orf2. It was validated on Western Blot using a cell lysate as a positive control.
Purification:	Affinity Purified

Target Details

Target:	URI1
---------	------

Target Details

Alternative Name:	C19orf2 (URI1 Products)
Background:	<p>The function of the C19orf2 protein remains unknown. The protein encoded by this gene binds to RNA polymerase II subunit 5 (RPB5) and negatively modulates transcription through its binding to RPB5. The encoded protein seems to have inhibitory effects on various types of activated transcription, but it requires the RPB5-binding region. This protein acts as a corepressor. It is suggested that it may require signaling processes for its function or that it negatively modulates genes in the chromatin structure. Two alternatively spliced transcript variants encoding different isoforms have been described for this gene.</p> <p>Alias Symbols: FLJ10575, NNX3, RMP, URI, C19orf2, PPP1R19</p> <p>Protein Interaction Partner: RPAP3, UBC, ITCH, NEDD4, ATF7, TTI1, RUVBL1, RPS6KB1, PPP1CC, HSP90AA1, APP, UXT, RPAP2, GPN1, RUVBL2, STAP1, POLR2E, URI1, DMAP1, GTF2F2,</p> <p>Protein Size: 495</p>
Molecular Weight:	55 kDa
Gene ID:	8725
NCBI Accession:	NM_134447 , NP_604431
UniProt:	Q6NX55

Application Details

Application Notes:	Optimal working dilutions should be determined experimentally by the investigator.
Comment:	Antigen size: 495 AA
Restrictions:	For Research Use only

Handling

Format:	Liquid
Concentration:	Lot specific
Buffer:	Liquid. Purified antibody supplied in 1x PBS buffer with 0.09 % (w/v) sodium azide and 2 % sucrose.
Preservative:	Sodium azide
Precaution of Use:	This product contains Sodium azide: a POISONOUS AND HAZARDOUS SUBSTANCE which should be handled by trained staff only.

Handling

Handling Advice:	Avoid repeated freeze-thaw cycles.
Storage:	-20 °C
Storage Comment:	For short term use, store at 2-8°C up to 1 week. For long term storage, store at -20°C in small aliquots to prevent freeze-thaw cycles.

Validation report #100034 for Immunohistochemistry (IHC)

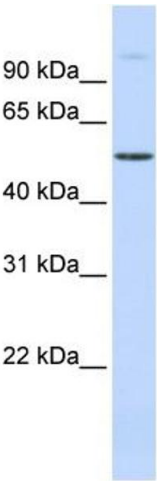


Western Blotting

Image 1. Host: Rabbit Target Name: URI1 Sample Type: MCF7 Antibody Dilution: 1.0ug/ml There is BioGPS gene expression data showing that URI1 is expressed in MCF7

Western Blotting

Image 2. Host: Rabbit Target Name: URI1 Sample Type: HepG2 Antibody Dilution: 1.0ug/ml There is BioGPS gene expression data showing that URI1 is expressed in HepG2



Western Blotting

Image 3. WB Suggested Anti-C19orf2 Antibody Titration:
0.2-1 ug/ml Positive Control: Human Muscle

Please check the [product details page](#) for more images. Overall 6 images are available for ABIN2784320.