

Datasheet for ABIN2784328
anti-PRKCDBP antibody (N-Term)



[Go to Product page](#)

1 Image

Overview

Quantity:	100 µL
Target:	PRKCDBP
Binding Specificity:	N-Term
Reactivity:	Human, Mouse, Rat, Cow, Dog, Guinea Pig, Rabbit
Host:	Rabbit
Clonality:	Polyclonal
Conjugate:	This PRKCDBP antibody is un-conjugated
Application:	Western Blotting (WB)

Product Details

Immunogen:	The immunogen is a synthetic peptide directed towards the N-terminal region of Mouse Prkcdp
Sequence:	TLTQLLAKAE RVGSHADAAQ ERAVRRAAQV QRLEANHGLL VARGKLHVLL
Predicted Reactivity:	Cow: 100%, Dog: 100%, Guinea Pig: 100%, Human: 100%, Mouse: 100%, Rabbit: 93%, Rat: 100%
Characteristics:	This is a rabbit polyclonal antibody against Prkcdp. It was validated on Western Blot.
Purification:	Affinity Purified

Target Details

Target:	PRKCDBP
Alternative Name:	Prkcdp (PRKCDBP Products)

Target Details

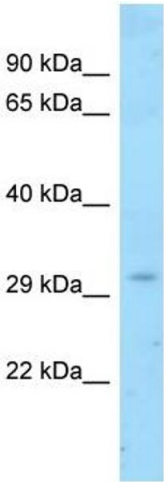
Background:	The function of this protein remains unknown. Alias Symbols: 3110015B12Rik, 6330514M23Rik, MGC6598, SRBC Protein Size: 260
Molecular Weight:	28 kDa
Gene ID:	109042
NCBI Accession:	NM_028444 , NP_082720
UniProt:	Q91VJ2

Application Details

Application Notes:	Optimal working dilutions should be determined experimentally by the investigator.
Comment:	Antigen size: 260 AA
Restrictions:	For Research Use only

Handling

Format:	Liquid
Concentration:	Lot specific
Buffer:	Liquid. Purified antibody supplied in 1x PBS buffer with 0.09 % (w/v) sodium azide and 2 % sucrose.
Preservative:	Sodium azide
Precaution of Use:	This product contains Sodium azide: a POISONOUS AND HAZARDOUS SUBSTANCE which should be handled by trained staff only.
Handling Advice:	Avoid repeated freeze-thaw cycles.
Storage:	-20 °C
Storage Comment:	For short term use, store at 2-8°C up to 1 week. For long term storage, store at -20°C in small aliquots to prevent freeze-thaw cycles.



Western Blotting

Image 1. WB Suggested Anti-Prkcdbp Antibody Titration:
1.0 ug/ml Positive Control: Mouse Stomach