



[Go to Product page](#)

Datasheet for ABIN2784335
anti-ZNF362 antibody (N-Term)

1 Image

Overview

Quantity:	100 µL
Target:	ZNF362
Binding Specificity:	N-Term
Reactivity:	Mouse, Rabbit, Guinea Pig, Rat, Human, Zebrafish (Danio rerio), Cow, Dog
Host:	Rabbit
Clonality:	Polyclonal
Conjugate:	This ZNF362 antibody is un-conjugated
Application:	Western Blotting (WB)

Product Details

Immunogen:	The immunogen is a synthetic peptide directed towards the N-terminal region of Human ZNF362
Sequence:	PSQLDNLVLI NKIKEQLMAE KIRPPHLPPT SASSQQPLL V PPAPAESSQA
Predicted Reactivity:	Cow: 100%, Dog: 100%, Guinea Pig: 100%, Human: 100%, Mouse: 100%, Rabbit: 100%, Rat: 100%, Zebrafish: 79%
Characteristics:	This is a rabbit polyclonal antibody against ZNF362. It was validated on Western Blot.
Purification:	Affinity Purified

Target Details

Target:	ZNF362
---------	--------

Target Details

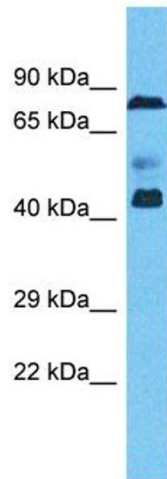
Alternative Name:	ZNF362 (ZNF362 Products)
Background:	ZNF362 may be involved in transcriptional regulation. Alias Symbols: RN, lin-29 Protein Interaction Partner: SUMO1, ELAVL1, Protein Size: 420
Molecular Weight:	46 kDa
Gene ID:	149076
NCBI Accession:	NM_152493 , NP_689706
UniProt:	Q5T0B9

Application Details

Application Notes:	Optimal working dilution should be determined by the investigator.
Restrictions:	For Research Use only

Handling

Format:	Liquid
Concentration:	1 mg/mL
Buffer:	Liquid. Purified antibody supplied in 1x PBS buffer with 0.09 % (w/v) sodium azide and 2 % sucrose.
Preservative:	Sodium azide
Precaution of Use:	This product contains Sodium azide: a POISONOUS AND HAZARDOUS SUBSTANCE which should be handled by trained staff only.
Handling Advice:	Avoid repeat freeze-thaw cycles.
Storage:	-20 °C
Storage Comment:	For short term use, store at 2-8°C up to 1 week. For long term storage, store at -20°C in small aliquots to prevent freeze-thaw cycles.



Western Blotting

Image 1. Host: Rabbit Target Name: ZNF362 Sample Type: Ovary Tumor lysates Antibody Dilution: 1.0ug/ml