

Datasheet for ABIN2784337  
**anti-SRFBP1 antibody (N-Term)**[Go to Product page](#)**1** Image**1** Publication

## Overview

Quantity:	100 µL
Target:	SRFBP1
Binding Specificity:	N-Term
Reactivity:	Human, Mouse, Rat, Cow, Dog, Horse, Rabbit, Guinea Pig
Host:	Rabbit
Clonality:	Polyclonal
Application:	Western Blotting (WB)

## Product Details

Immunogen:	The immunogen is a synthetic peptide directed towards the N terminal region of human SRFBP1
Sequence:	LKSKKGTEDA LLKNQRRAR LLEEIHAMKE LKPDIVTKSA LGDDINFEKI
Predicted Reactivity:	Cow: 93%, Dog: 100%, Guinea Pig: 100%, Horse: 100%, Human: 100%, Mouse: 100%, Rabbit: 93%, Rat: 93%
Characteristics:	This is a rabbit polyclonal antibody against SRFBP1. It was validated on Western Blot using a cell lysate as a positive control.
Purification:	Affinity Purified

## Target Details

Target:	SRFBP1
Alternative Name:	SRFBP1 ( <a href="#">SRFBP1 Products</a> )

## Target Details

Background: SRFBP1 may be involved in regulating transcriptional activation of cardiac genes during the aging process. It may play a role in biosynthesis and/or processing of SLC2A4 in adipose cells.  
Alias Symbols: BUD22, FLJ25286, P49, Rlb1, STRAP, p49/STRAP  
Protein Interaction Partner: SRF, UBC, SLC2A4,  
Protein Size: 429

Molecular Weight: 49 kDa

Gene ID: 153443

NCBI Accession: [NM\\_152546](#), [NP\\_689759](#)

UniProt: [Q8NEF9](#)

## Application Details

Application Notes: Optimal working dilutions should be determined experimentally by the investigator.

Comment: Antigen size: 429 AA

Restrictions: For Research Use only

## Handling

Format: Liquid

Concentration: Lot specific

Buffer: Liquid. Purified antibody supplied in 1x PBS buffer with 0.09 % (w/v) sodium azide and 2 % sucrose.

Preservative: Sodium azide

Precaution of Use: This product contains Sodium azide: a POISONOUS AND HAZARDOUS SUBSTANCE which should be handled by trained staff only.

Handling Advice: Avoid repeated freeze-thaw cycles.

Storage: -20 °C

Storage Comment: For short term use, store at 2-8°C up to 1 week. For long term storage, store at -20°C in small aliquots to prevent freeze-thaw cycles.

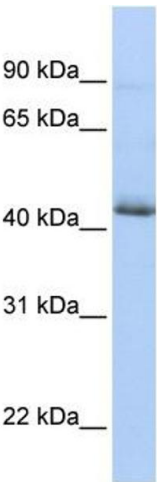
## Publications

Product cited in: Jena, Janjanam, Naru, Kumar, Kumar, Singh, Mohapatra, Kola, Anand, Jaswal, Verma, Malakar,

Publications

Dang, Kaushik, Reddy, Mohanty: "DIGE based proteome analysis of mammary gland tissue in water buffalo (Bubalus bubalis): Lactating vis-a-vis heifer." in: **Journal of proteomics**, Vol. 119C, pp. 100-111, (2015) ([PubMed](#)).

Images



Western Blotting

**Image 1.** WB Suggested Anti-SRFBP1 Antibody Titration: 0.2-1 ug/ml ELISA Titer: 1:62500 Positive Control: HepG2 cell lysate