

Datasheet for ABIN2784352  
**anti-ZNF620 antibody (N-Term)**



[Go to Product page](#)

1 Image

## Overview

Quantity:	100 µL
Target:	ZNF620
Binding Specificity:	N-Term
Reactivity:	Human, Dog
Host:	Rabbit
Clonality:	Polyclonal
Conjugate:	This ZNF620 antibody is un-conjugated
Application:	Western Blotting (WB)

## Product Details

Immunogen:	The immunogen is a synthetic peptide directed towards the N terminal region of human ZNF620
Sequence:	KETESFRLMV GGLPGNVSQH LDFGSSLEQP QGHWIIKTKS KRRHFTDTSA
Predicted Reactivity:	Dog: 80%, Human: 100%
Characteristics:	This is a rabbit polyclonal antibody against ZNF620. It was validated on Western Blot using a cell lysate as a positive control.
Purification:	Affinity Purified

## Target Details

Target:	ZNF620
---------	--------

## Target Details

Alternative Name:	ZNF620 ( <a href="#">ZNF620 Products</a> )
Background:	ZNF620 is a new candidate transcription factor. Alias Symbols: MGC50836 Protein Interaction Partner: CBX5, Protein Size: 422

Molecular Weight: 48 kDa

Gene ID: 253639

NCBI Accession: [NM\\_175888](#), [NP\\_787084](#)

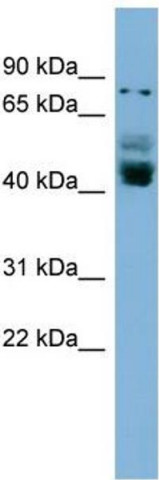
UniProt: [Q6ZNG0](#)

## Application Details

Application Notes:	Optimal working dilutions should be determined experimentally by the investigator.
Comment:	Antigen size: 422 AA
Restrictions:	For Research Use only

## Handling

Format:	Liquid
Concentration:	Lot specific
Buffer:	Liquid. Purified antibody supplied in 1x PBS buffer with 0.09 % (w/v) sodium azide and 2 % sucrose.
Preservative:	Sodium azide
Precaution of Use:	This product contains Sodium azide: a POISONOUS AND HAZARDOUS SUBSTANCE which should be handled by trained staff only.
Handling Advice:	Avoid repeated freeze-thaw cycles.
Storage:	-20 °C
Storage Comment:	For short term use, store at 2-8°C up to 1 week. For long term storage, store at -20°C in small aliquots to prevent freeze-thaw cycles.



Western Blotting

**Image 1.** WB Suggested Anti-ZNF620 Antibody Titration:  
0.2-1 ug/ml ELISA Titer: 1:1562500 Positive Control: NCI-  
H226 cell lysate