

Datasheet for ABIN2784367  
**anti-PYHIN1 antibody (N-Term)**[Go to Product page](#)

## 1 Image

## Overview

Quantity:	100 µL
Target:	PYHIN1
Binding Specificity:	N-Term
Reactivity:	Human, Mouse, Cow, Dog, Rat, Horse, Pig, Rabbit
Host:	Rabbit
Clonality:	Polyclonal
Application:	Western Blotting (WB)

## Product Details

Immunogen:	The immunogen is a synthetic peptide directed towards the N terminal region of human PYHIN1
Sequence:	ANNYKKIVLL KGLEVINDYH FRIVKSLLSN DLKLNPKMKE EYDKIQIADL
Predicted Reactivity:	Cow: 91%, Dog: 91%, Horse: 91%, Human: 100%, Mouse: 100%, Pig: 85%, Rabbit: 93%, Rat: 85%
Characteristics:	This is a rabbit polyclonal antibody against PYHIN1. It was validated on Western Blot using a cell lysate as a positive control.
Purification:	Affinity Purified

## Target Details

Target:	PYHIN1
Alternative Name:	PYHIN1 ( <a href="#">PYHIN1 Products</a> )

## Target Details

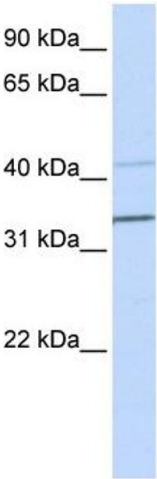
Background:	<p>PYHIN1 belongs to the HIN-200 family. This protein is major mediator of the tumor suppressor activity of IFN in breast cancer cells. It promotes ubiquitination and subsequent degradation of MDM2, which leads to p53/TP53 stabilization, and HDAC1, which in turn enhances maspin expression, and impairs invasive activity of cancer cells.</p> <p>Alias Symbols: IFIX, MGC23885, RP11-520H16.1</p> <p>Protein Interaction Partner: MDM2,</p> <p>Protein Size: 492</p>
Molecular Weight:	55 kDa
Gene ID:	149628
NCBI Accession:	<a href="#">NM_152501</a> , <a href="#">NP_689714</a>
UniProt:	<a href="#">Q6K0P9</a>

## Application Details

Application Notes:	Optimal working dilutions should be determined experimentally by the investigator.
Comment:	Antigen size: 492 AA
Restrictions:	For Research Use only

## Handling

Format:	Liquid
Concentration:	Lot specific
Buffer:	Liquid. Purified antibody supplied in 1x PBS buffer with 0.09 % (w/v) sodium azide and 2 % sucrose.
Preservative:	Sodium azide
Precaution of Use:	This product contains Sodium azide: a POISONOUS AND HAZARDOUS SUBSTANCE which should be handled by trained staff only.
Handling Advice:	Avoid repeated freeze-thaw cycles.
Storage:	-20 °C
Storage Comment:	For short term use, store at 2-8°C up to 1 week. For long term storage, store at -20°C in small aliquots to prevent freeze-thaw cycles.



Western Blotting

**Image 1.** WB Suggested Anti-PYHIN1 Antibody Titration:  
0.2-1 ug/ml ELISA Titer: 1:62500 Positive Control: MCF7 cell lysate