

Datasheet for ABIN2784374

**anti-Retinoblastoma Binding Protein 8 antibody (C-Term)**[Go to Product page](#)**3** Images

## Overview

Quantity:	100 µL
Target:	Retinoblastoma Binding Protein 8 (RBBP8)
Binding Specificity:	C-Term
Reactivity:	Human, Pig, Cow, Dog, Rabbit, Guinea Pig, Horse
Host:	Rabbit
Clonality:	Polyclonal
Conjugate:	This Retinoblastoma Binding Protein 8 antibody is un-conjugated
Application:	Western Blotting (WB)

## Product Details

Immunogen:	The immunogen is a synthetic peptide directed towards the C terminal region of human RBBP8
Sequence:	ETVDMDCITLV SETVLLKMKK QEKGKSSN EERKMNDLSLE DMFDRTTTEE
Predicted Reactivity:	Cow: 79%, Dog: 86%, Guinea Pig: 83%, Horse: 79%, Human: 100%, Pig: 100%, Rabbit: 100%
Characteristics:	This is a rabbit polyclonal antibody against RBBP8. It was validated on Western Blot using a cell lysate as a positive control.
Purification:	Affinity Purified

## Target Details

Target:	Retinoblastoma Binding Protein 8 (RBBP8)
Alternative Name:	RBBP8 ( <a href="#">RBBP8 Products</a> )

## Target Details

Background:	<p>RBBP8 is a ubiquitously expressed nuclear protein. It is found among several proteins that bind directly to retinoblastoma protein, which regulates cell proliferation. This protein complexes with transcriptional co-repressor CTBP. It is also associated with BRCA1 and is thought to modulate the functions of BRCA1 in transcriptional regulation, DNA repair, and/or cell cycle checkpoint control. It is suggested that this gene may itself be a tumor suppressor acting in the same pathway as BRCA1. Three transcript variants encoding two different isoforms have been found for this gene. More transcript variants exist, but their full-length natures have not been determined. The protein encoded by this gene is a ubiquitously expressed nuclear protein. It is found among several proteins that bind directly to retinoblastoma protein, which regulates cell proliferation. This protein complexes with transcriptional co-repressor CTBP. It is also associated with BRCA1 and is thought to modulate the functions of BRCA1 in transcriptional regulation, DNA repair, and/or cell cycle checkpoint control. It is suggested that this gene may itself be a tumor suppressor acting in the same pathway as BRCA1. Three transcript variants encoding two different isoforms have been found for this gene. More transcript variants exist, but their full-length natures have not been determined.</p> <p>Alias Symbols: CTIP, RIM, JWDS, SAE2, SCKL2</p> <p>Protein Interaction Partner: LMO4, PIN1, LMO1, MDM2, BRCA1, RBL1, TMEM54, PRRG4, RGS17, IKBKG, IGFBP7, EEF1A1, CTBP2, CLU, MAP2K4, RAF1, RBL2, PCNA, ZNF350, NBN, UIMC1, PALB2, BARD1, SPEN, RAD50, CTBP1, RB1, UBC, FXR2, RBBP8, IKZF1, LIMS1, SIAH2, SIAH1, LMO2, WDYHV1, ATM, TGIF2, IKZF</p> <p>Protein Size: 867</p>
Molecular Weight:	98 kDa
Gene ID:	5932
NCBI Accession:	<a href="#">NM_203292</a> , <a href="#">NP_976037</a>
UniProt:	<a href="#">A6NKN2</a>
Pathways:	<a href="#">Cell Division Cycle</a> , <a href="#">DNA Damage Repair</a>

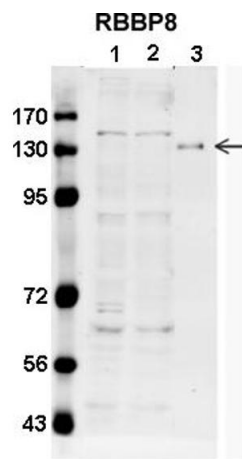
## Application Details

Application Notes:	Optimal working dilutions should be determined experimentally by the investigator.
Comment:	Antigen size: 867 AA
Restrictions:	For Research Use only

# Handling

Format:	Liquid
Concentration:	Lot specific
Buffer:	Liquid. Purified antibody supplied in 1x PBS buffer with 0.09 % (w/v) sodium azide and 2 % sucrose.
Preservative:	Sodium azide
Precaution of Use:	This product contains Sodium azide: a POISONOUS AND HAZARDOUS SUBSTANCE which should be handled by trained staff only.
Handling Advice:	Avoid repeated freeze-thaw cycles.
Storage:	-20 °C
Storage Comment:	For short term use, store at 2-8°C up to 1 week. For long term storage, store at -20°C in small aliquots to prevent freeze-thaw cycles.

# Images



See Immunoblot 2 Data for more information.

## Western Blotting

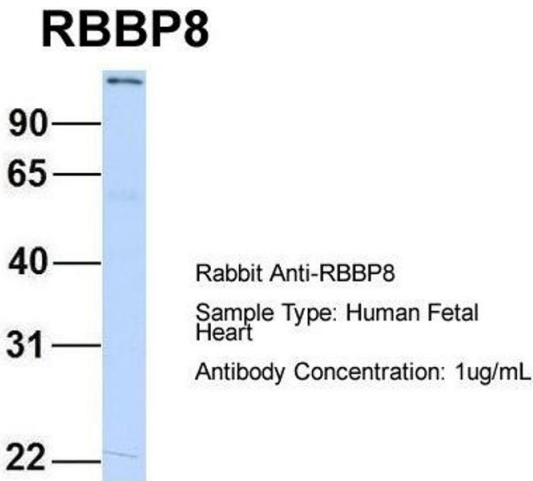
**Image 1. Sample type:** 1. HCT116 lysate (50ug)  
2. MCF7 lysate (50ug)  
3. rCtIP (30ng)

**Primary Dilution:** 1:1000

**Secondary Antibody:** anti-Rabbit IR700

**Secondary Dilution:** 1:5000

**Image Submitted by:** Nodar Makharashvili  
University of Texas, Austin



## Western Blotting

**Image 2. Host:** Rabbit **Target Name:** RBBP8 **Sample Type:** Human Fetal Heart **Antibody Dilution:** 1.0ug/ml



Western Blotting

**Image 3.** WB Suggested Anti-RBBP8 Antibody Titration: 0.2-1 ug/ml ELISA Titer: 1:312500 Positive Control: Human Placenta