

Datasheet for ABIN2784379
anti-ZNF662 antibody (Middle Region)[Go to Product page](#)

1 Image

Overview

Quantity:	100 µL
Target:	ZNF662
Binding Specificity:	Middle Region
Reactivity:	Human, Dog, Horse, Pig
Host:	Rabbit
Clonality:	Polyclonal
Application:	Western Blotting (WB)

Product Details

Immunogen:	The immunogen is a synthetic peptide directed towards the middle region of human ZNF662
Sequence:	QIFYICEECG KCFDQNEFD QHQTHTNGEK VYGCKECGKA FSFRSHCIAH
Predicted Reactivity:	Dog: 79%, Horse: 79%, Human: 100%, Pig: 86%
Characteristics:	This is a rabbit polyclonal antibody against ZNF662. It was validated on Western Blot using a cell lysate as a positive control.
Purification:	Affinity Purified

Target Details

Target:	ZNF662
Alternative Name:	ZNF662 (ZNF662 Products)
Background:	The function of this protein remains unknown.

Target Details

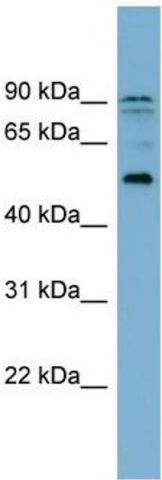
	Alias Symbols: FLJ45880, MGC149141 Protein Interaction Partner: TRAF2, TRAF1, Protein Size: 452
Molecular Weight:	51 kDa
Gene ID:	389114
NCBI Accession:	NM_001134656 , NP_001128128
UniProt:	Q6ZS27

Application Details

Application Notes:	Optimal working dilutions should be determined experimentally by the investigator.
Comment:	Antigen size: 452 AA
Restrictions:	For Research Use only

Handling

Format:	Liquid
Concentration:	Lot specific
Buffer:	Liquid. Purified antibody supplied in 1x PBS buffer with 0.09 % (w/v) sodium azide and 2 % sucrose.
Preservative:	Sodium azide
Precaution of Use:	This product contains Sodium azide: a POISONOUS AND HAZARDOUS SUBSTANCE which should be handled by trained staff only.
Handling Advice:	Avoid repeated freeze-thaw cycles.
Storage:	-20 °C
Storage Comment:	For short term use, store at 2-8°C up to 1 week. For long term storage, store at -20°C in small aliquots to prevent freeze-thaw cycles.



Western Blotting

Image 1. WB Suggested Anti-ZNF662 Antibody Titration:
0.2-1 ug/ml Positive Control: OVCAR-3 cell lysate