



[Go to Product page](#)

Datasheet for ABIN2784415  
**anti-UBTFL1 antibody (N-Term)**

1 Image

### Overview

Quantity:	100 µL
Target:	UBTFL1
Binding Specificity:	N-Term
Reactivity:	Human, Guinea Pig, Rat
Host:	Rabbit
Clonality:	Polyclonal
Application:	Western Blotting (WB)

### Product Details

Immunogen:	The immunogen is a synthetic peptide directed towards the N terminal region of human LOC642623
Sequence:	ELVLEAKKCV KKMNKSQKYR NGPDFPKRPL TAYNRFFKES WPQYSQMYPG
Predicted Reactivity:	Guinea Pig: 77%, Human: 100%, Rat: 77%
Characteristics:	This is a rabbit polyclonal antibody against LOC642623. It was validated on Western Blot using a cell lysate as a positive control.
Purification:	Affinity Purified

### Target Details

Target:	UBTFL1
Alternative Name:	UBTFL1 ( <a href="#">UBTFL1 Products</a> )

## Target Details

---

Background: The exact function of LOC642623 remains unknown.  
Alias Symbols: HMGPI, C11orf27  
Protein Size: 393

---

Molecular Weight: 46 kDa

---

Gene ID: 642623

---

NCBI Accession: [XM\\_926094](#), [XP\\_931187](#)

---

## Application Details

---

Application Notes: Optimal working dilutions should be determined experimentally by the investigator.

---

Comment: Antigen size: 393 AA

---

Restrictions: For Research Use only

---

## Handling

---

Format: Liquid

---

Concentration: Lot specific

---

Buffer: Liquid. Purified antibody supplied in 1x PBS buffer with 0.09 % (w/v) sodium azide and 2 % sucrose.

---

Preservative: Sodium azide

---

Precaution of Use: This product contains Sodium azide: a POISONOUS AND HAZARDOUS SUBSTANCE which should be handled by trained staff only.

---

Handling Advice: Avoid repeated freeze-thaw cycles.

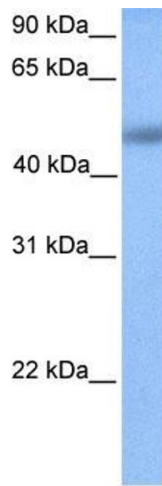
---

Storage: -20 °C

---

Storage Comment: For short term use, store at 2-8°C up to 1 week. For long term storage, store at -20°C in small aliquots to prevent freeze-thaw cycles.

---



### Western Blotting

**Image 1.** WB Suggested Anti-UBTFL1 Antibody Titration:  
0.2-1 ug/ml Positive Control: MCF7 cell lysate