

Datasheet for ABIN2784451
anti-LCN6 antibody (Middle Region)[Go to Product page](#)

1 Image

Overview

Quantity:	100 µL
Target:	LCN6
Binding Specificity:	Middle Region
Reactivity:	Human, Dog
Host:	Rabbit
Clonality:	Polyclonal
Application:	Western Blotting (WB)

Product Details

Immunogen:	The immunogen is a synthetic peptide directed towards the middle region of human LCN6
Sequence:	LWVLATNFRD YAIIFTQLEF GDEPFNTVEL YSLTETASQE AMGLFTKWSR
Predicted Reactivity:	Dog: 86%, Human: 100%
Characteristics:	This is a rabbit polyclonal antibody against LCN6. It was validated on Western Blot using a cell lysate as a positive control.
Purification:	Affinity Purified

Target Details

Target:	LCN6
Alternative Name:	LCN6 (LCN6 Products)
Background:	LCN6 may play a role in male fertility.

Target Details

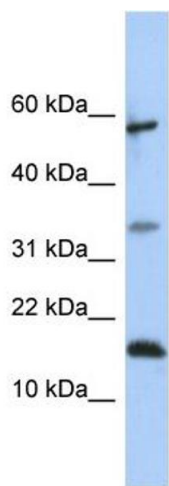
	Alias Symbols: LCN5, UNQ643, hLcn5
	Protein Size: 163
Molecular Weight:	18 kDa
Gene ID:	158062
NCBI Accession:	NM_198946 , NP_945184
UniProt:	P62502

Application Details

Application Notes:	Optimal working dilutions should be determined experimentally by the investigator.
Comment:	Antigen size: 163 AA
Restrictions:	For Research Use only

Handling

Format:	Liquid
Concentration:	Lot specific
Buffer:	Liquid. Purified antibody supplied in 1x PBS buffer with 0.09 % (w/v) sodium azide and 2 % sucrose.
Preservative:	Sodium azide
Precaution of Use:	This product contains Sodium azide: a POISONOUS AND HAZARDOUS SUBSTANCE which should be handled by trained staff only.
Handling Advice:	Avoid repeated freeze-thaw cycles.
Storage:	-20 °C
Storage Comment:	For short term use, store at 2-8°C up to 1 week. For long term storage, store at -20°C in small aliquots to prevent freeze-thaw cycles.



Western Blotting

Image 1. WB Suggested Anti-LCN6 Antibody Titration: 0.2-1 ug/ml ELISA Titer: 1:12500 Positive Control: 721_B cell lysate