

Datasheet for ABIN2784454
anti-MAS1 antibody (N-Term)



[Go to Product page](#)

1 Image

Overview

Quantity:	100 µL
Target:	MAS1
Binding Specificity:	N-Term
Reactivity:	Human
Host:	Rabbit
Clonality:	Polyclonal
Conjugate:	This MAS1 antibody is un-conjugated
Application:	Western Blotting (WB)

Product Details

Immunogen:	The immunogen is a synthetic peptide directed towards the N-terminal region of Human MAS1
Sequence:	VTSFVVEEPT NISTGRNASV GNAHRQIPIV HWVIMSISPV GFVENGILLW
Predicted Reactivity:	Human: 100%
Characteristics:	This is a rabbit polyclonal antibody against MAS1. It was validated on Western Blot.
Purification:	Affinity Purified

Target Details

Target:	MAS1
Alternative Name:	MAS1 (MAS1 Products)
Background:	The structure of MAS1 indicates that it belongs to the class of receptors that are coupled to

Target Details

GTP-binding proteins and share a conserved structural motif, which is described as a '7-transmembrane segment' following the prediction that these hydrophobic segments form membrane-spanning alpha-helices. The MAS1 protein may be a receptor that, when activated, modulates a critical component in a growth-regulating pathway to bring about oncogenic effects.

Alias Symbols: MAS

Protein Interaction Partner: SNTA1, AGT,

Protein Size: 325

Molecular Weight: 35 kDa

Gene ID: 4142

NCBI Accession: [NM_002377](#), [NP_002368](#)

UniProt: [P04201](#)

Pathways: [ACE Inhibitor Pathway](#), [Regulation of Carbohydrate Metabolic Process](#)

Application Details

Restrictions: For Research Use only

Handling

Format: Liquid

Concentration: 1 mg/mL

Buffer: Liquid. Purified antibody supplied in 1x PBS buffer with 0.09 % (w/v) sodium azide and 2 % sucrose.

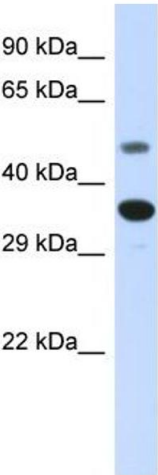
Preservative: Sodium azide

Precaution of Use: This product contains Sodium azide: a POISONOUS AND HAZARDOUS SUBSTANCE which should be handled by trained staff only.

Handling Advice: Avoid repeat freeze-thaw cycles.

Storage: -20 °C

Storage Comment: For short term use, store at 2-8°C up to 1 week. For long term storage, store at -20°C in small aliquots to prevent freeze-thaw cycles.



Host: Rabbit
Target Name: MAS1
Sample Tissue: Fetal Liver Lysate
Antibody Dilution: 1.0µg/ml

Western Blotting

Image 1. Host: Rabbit Target Name: MAS1 Sample Type: Fetal Liver lysates Antibody Dilution: 1.0ug/ml