

Datasheet for ABIN2784458
anti-RSRC2 antibody (C-Term)[Go to Product page](#)

3 Images

Overview

Quantity:	100 µL
Target:	RSRC2
Binding Specificity:	C-Term
Reactivity:	Human, Mouse, Rat, Dog, Rabbit, Cow, Guinea Pig, Horse
Host:	Rabbit
Clonality:	Polyclonal
Application:	Western Blotting (WB), Immunohistochemistry (IHC)

Product Details

Immunogen:	The immunogen is a synthetic peptide directed towards the C terminal region of human RSRC2
Sequence:	DQNVKFRKLM GIKSEDEAGC SSVDEESYKT LKQQEEVFRN LDAQYEMARS
Predicted Reactivity:	Cow: 100%, Dog: 100%, Guinea Pig: 100%, Horse: 100%, Human: 100%, Mouse: 100%, Rabbit: 100%, Rat: 100%
Characteristics:	This is a rabbit polyclonal antibody against RSRC2. It was validated on Western Blot and immunohistochemistry.
Purification:	Protein A purified

Target Details

Target:	RSRC2
Alternative Name:	RSRC2 (RSRC2 Products)

Target Details

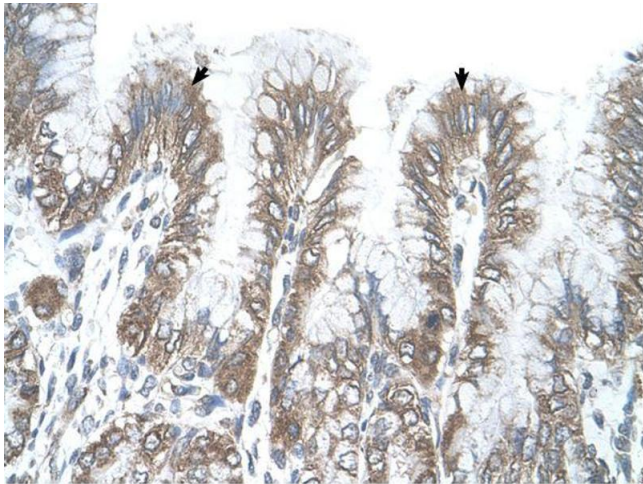
Background:	In vitro study revealed that RSRC2 might play a role in cell proliferation. RSRC2 may be a novel tumor suppressor of esophageal cancer cell growth. Alias Symbols: FLJ11021 Protein Interaction Partner: CCDC155, CMTM5, RINT1, TRIM54, UBQLN1, PNMA1, GOLGA2, TRIM23, UPF2, SRPK2, SRPK1, APP, UBQLN4, Protein Size: 434
Molecular Weight:	50 kDa
Gene ID:	65117
NCBI Accession:	NM_023012 , NP_075388
UniProt:	Q7L4I2

Application Details

Application Notes:	Optimal working dilutions should be determined experimentally by the investigator.
Comment:	Antigen size: 434 AA
Restrictions:	For Research Use only

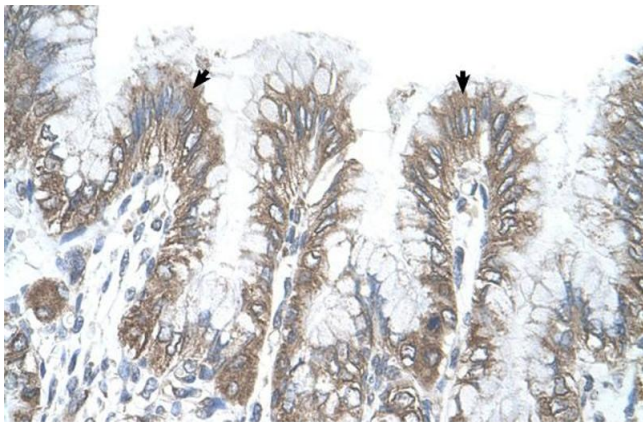
Handling

Format:	Liquid
Concentration:	Lot specific
Buffer:	Liquid. Purified antibody supplied in 1x PBS buffer with 0.09 % (w/v) sodium azide and 2 % sucrose.
Preservative:	Sodium azide
Precaution of Use:	This product contains Sodium azide: a POISONOUS AND HAZARDOUS SUBSTANCE which should be handled by trained staff only.
Handling Advice:	Avoid repeated freeze-thaw cycles.
Storage:	-20 °C
Storage Comment:	For short term use, store at 2-8°C up to 1 week. For long term storage, store at -20°C in small aliquots to prevent freeze-thaw cycles.



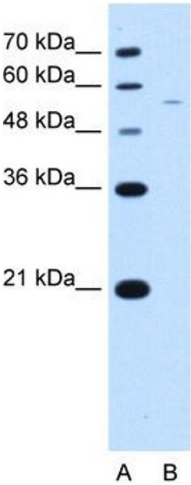
Immunohistochemistry

Image 1.



Immunohistochemistry

Image 2. Human Stomach



Western Blotting

Image 3. WB Suggested Antibody Titration: 2.5 ug/ml
Positive Control: Jurkat RSR2 is strongly supported by BioGPS gene expression data to be expressed in Human Jurkat cells