

Datasheet for ABIN2784460
anti-NR4A3 antibody (Middle Region)



[Go to Product page](#)

2 Images

Overview

Quantity:	100 µL
Target:	NR4A3
Binding Specificity:	Middle Region
Reactivity:	Human, Mouse, Rat, Rabbit, Cow, Horse, Guinea Pig, Dog, Zebrafish (Danio rerio)
Host:	Rabbit
Clonality:	Polyclonal
Conjugate:	This NR4A3 antibody is un-conjugated
Application:	Western Blotting (WB)

Product Details

Immunogen:	The immunogen is a synthetic peptide directed towards the middle region of human TEC
Sequence:	VKVSDFGMAR YVLDDQYTSS SGAKFPVKWC PPEVFNYSRF SSKSDVWSFG
Predicted Reactivity:	Cow: 100%, Dog: 100%, Guinea Pig: 100%, Horse: 100%, Human: 100%, Mouse: 100%, Rabbit: 100%, Rat: 100%, Zebrafish: 85%
Characteristics:	This is a rabbit polyclonal antibody against TEC. It was validated on Western Blot.
Purification:	Affinity Purified

Target Details

Target:	NR4A3
Alternative Name:	TEC (NR4A3 Products)

Target Details

Background:	<p>The protein encoded by this gene belongs to the Tec family of non-receptor protein-tyrosine kinases containing a pleckstrin homology domain. Tec family kinases are involved in the intracellular signaling mechanisms of cytokine receptors, lymphocyte surface antigens, heterotrimeric G-protein coupled receptors, and integrin molecules. They are also key players in the regulation of the immune functions. Tec kinase is an integral component of T cell signaling and has a distinct role in T cell activation. This gene may be associated with myelodysplastic syndrome.</p> <p>Alias Symbols: MGC126760, MGC126762, PSCTK4</p> <p>Protein Interaction Partner: ERBB2, MED28, GRB2, SHC1, FASLG, Nedd4, UBC, IKBKG, STAP1, PIP4K2A, PLK4, PTPN18, PIK3R3, GNA12, SOCS1, PIP5K1A, PTPN21, DOK1, TEC, PLCG2, WAS, BTK, BMX, TP53, PRLR, PLCG1, PIK3R1, LYN, KIT, VAV1, JAK2, JAK1, ARHGEF12, GNA13, RHOA, RAC1, PIK3R2,</p> <p>Protein Size: 631</p>
Molecular Weight:	73 kDa
Gene ID:	7006
NCBI Accession:	NM_003215 , NP_003206
UniProt:	P42680
Pathways:	Fc-epsilon Receptor Signaling Pathway , Nuclear Receptor Transcription Pathway , Steroid Hormone Mediated Signaling Pathway

Application Details

Application Notes:	Optimal working dilutions should be determined experimentally by the investigator.
Comment:	Antigen size: 631 AA
Restrictions:	For Research Use only

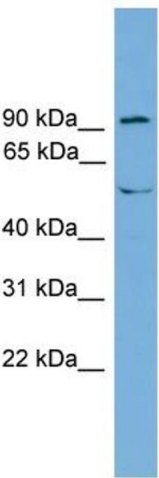
Handling

Format:	Liquid
Concentration:	Lot specific
Buffer:	Liquid. Purified antibody supplied in 1x PBS buffer with 0.09 % (w/v) sodium azide and 2 % sucrose.
Preservative:	Sodium azide

Handling

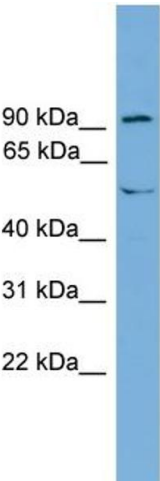
Precaution of Use:	This product contains Sodium azide: a POISONOUS AND HAZARDOUS SUBSTANCE which should be handled by trained staff only.
Handling Advice:	Avoid repeated freeze-thaw cycles.
Storage:	-20 °C
Storage Comment:	For short term use, store at 2-8°C up to 1 week. For long term storage, store at -20°C in small aliquots to prevent freeze-thaw cycles.

Images



Western Blotting

Image 1. WB Suggested Anti-TEC Antibody Titration: 0.2-1 ug/ml Positive Control: THP-1 cell lysate



Rabbit Anti-TEC Antibody
Catalog Number: ARP51209
Lot Number: QC16642
Lane: THP-1 Cell Lysate

Antibody Titration: 1.0µg/ml
Gel Concentration: 12%

Western Blotting

Image 2. WB Suggested Anti-TEC Antibody Titration: 0.2-1 µg/mL Positive Control: THP-1 cell lysate