



[Go to Product page](#)

Datasheet for ABIN2784461
anti-NEDD9 antibody (Middle Region)

2 Images

Overview

Quantity:	100 µL
Target:	NEDD9
Binding Specificity:	Middle Region
Reactivity:	Human, Rat, Mouse, Dog, Guinea Pig, Horse, Rabbit, Cow
Host:	Rabbit
Clonality:	Polyclonal
Application:	Western Blotting (WB), Immunohistochemistry (IHC)

Product Details

Immunogen:	The immunogen is a synthetic peptide directed towards the middle region of human NEDD9
Sequence:	HPPPQLGQSV GSQNDAYDVP RGVQFLEPPA ETSEKANPQE RDGVYDVPLH
Predicted Reactivity:	Cow: 86%, Dog: 93%, Guinea Pig: 79%, Horse: 93%, Human: 100%, Mouse: 92%, Rabbit: 79%, Rat: 79%
Characteristics:	This is a rabbit polyclonal antibody against NEDD9. It was validated on Western Blot and immunohistochemistry.
Purification:	Protein A purified

Target Details

Target:	NEDD9
Alternative Name:	NEDD9 (NEDD9 Products)

Target Details

Background:	<p>Variation in NEDD9 is associated with susceptibility to late-onset Alzheimer and Parkinson diseases. Changes in expression of the scaffold protein HEF1/CAS-L/NEDD9 were found to be a potent prometastatic stimulus in melanoma and other cancers.</p> <p>Alias Symbols: CAS-L, CASL, HEF1, dJ49G10.2, dJ761I2.1, CAS2, CASS2</p> <p>Protein Interaction Partner: NFKBIA, NAB2, RFX6, PRR20A, BANP, RBPMS, BCAR3, TRIP6, TRIM27, REL, SMAD1, APP, CRK, UBC, PIK3CA, DIMT1, ELSPBP1, NEDD9, ITCH, CHAT, MICAL1, SH2D3C, SMAD3, BCAR1, PXN, CRKL, ZYX, SMAD2, PTK2B, PTK2, NCK1, ID2, RAPGEF1, PTPN12, CDH1, ABL1, PTPN11, LYN, LCK</p> <p>Protein Size: 834</p>
Molecular Weight:	93 kDa
Gene ID:	4739
NCBI Accession:	NM_006403 , NP_006394
UniProt:	Q14511

Application Details

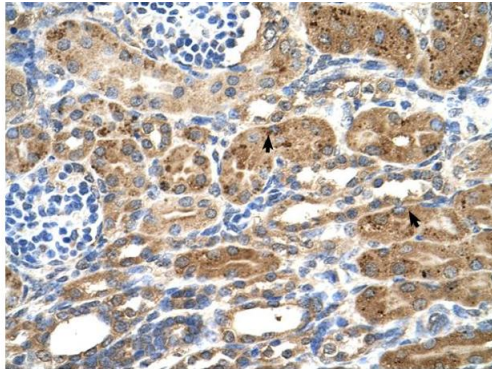
Application Notes:	Optimal working dilutions should be determined experimentally by the investigator.
Comment:	Antigen size: 834 AA
Restrictions:	For Research Use only

Handling

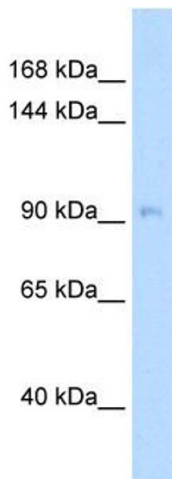
Format:	Liquid
Concentration:	Lot specific
Buffer:	Liquid. Purified antibody supplied in 1x PBS buffer with 0.09 % (w/v) sodium azide and 2 % sucrose.
Preservative:	Sodium azide
Precaution of Use:	This product contains Sodium azide: a POISONOUS AND HAZARDOUS SUBSTANCE which should be handled by trained staff only.
Handling Advice:	Avoid repeated freeze-thaw cycles.
Storage:	-20 °C
Storage Comment:	For short term use, store at 2-8°C up to 1 week. For long term storage, store at -20°C in small

aliquots to prevent freeze-thaw cycles.

Images



Rabbit Anti-NEDD9 Antibody
Catalog Number: ARP51210
Lot Number: QC16643
Paraffin Embedded Tissue: Human Kidney
Cells with Positive label: Epithelial cells of renal tubule (Indicated with Arrows)
Antibody Concentration: 4.0-8.0 µg/ml
Magnification: 400X



Immunohistochemistry

Image 1. Human kidney

Western Blotting

Image 2. WB Suggested Anti-NEDD9 Antibody Titration: 5.0ug/ml Positive Control: 721_B cell lysate NEDD9 is strongly supported by BioGPS gene expression data to be expressed in Human 721_B cells