

Datasheet for ABIN2784463
anti-BRK1 antibody (Middle Region)

3 Images

[Go to Product page](#)

Overview

Quantity:	100 µL
Target:	BRK1
Binding Specificity:	Middle Region
Reactivity:	Human, Mouse, Rat, Zebrafish (Danio rerio), Dog, Pig, Cow, Horse
Host:	Rabbit
Clonality:	Polyclonal
Conjugate:	This BRK1 antibody is un-conjugated
Application:	Immunohistochemistry (IHC), Western Blotting (WB)

Product Details

Immunogen:	The immunogen is a synthetic peptide directed towards the middle region of human C3orf10
Sequence:	YIEIITSSIK KIADFLNSFD MSCRSRLATL NEKLTALERR IEYIEARVTK
Predicted Reactivity:	Cow: 100%, Dog: 100%, Horse: 100%, Human: 100%, Mouse: 100%, Pig: 100%, Rat: 100%, Zebrafish: 100%
Characteristics:	This is a rabbit polyclonal antibody against C3orf10. It was validated on Western Blot and immunohistochemistry.
Purification:	Protein A purified

Target Details

Target:	BRK1
---------	------

Target Details

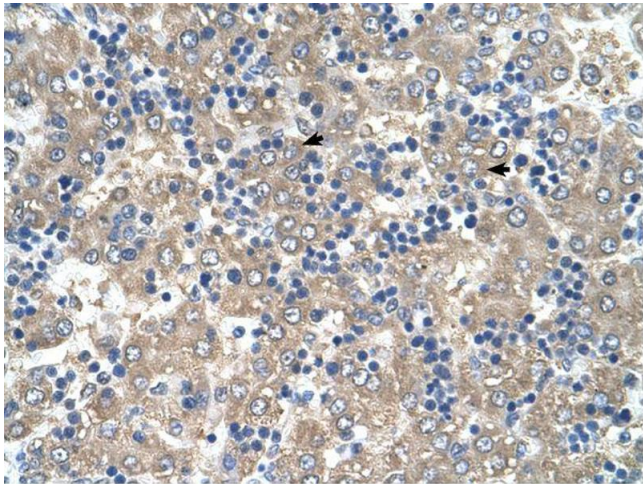
Alternative Name:	C3orf10 (BRK1 Products)
Background:	<p>C3orf10 is involved in regulation of actin and microtubule organization. It is a part of a WAVE complex that activates the Arp2/3 complex.</p> <p>Alias Symbols: HSPC300, MDS027, hHBrk1, C3orf10</p> <p>Protein Interaction Partner: DTNBP1, ACTBL2, NCKAP1, CDKN2A, ACTG1, ACTA1, UBC, PFDN1, CYFIP2, WASF1, NCK1,</p> <p>Protein Size: 75</p>
Molecular Weight:	9 kDa
Gene ID:	55845
NCBI Accession:	NM_018462 , NP_060932
UniProt:	Q8WUW1
Pathways:	RTK Signaling

Application Details

Application Notes:	Optimal working dilutions should be determined experimentally by the investigator.
Comment:	Antigen size: 75 AA
Restrictions:	For Research Use only

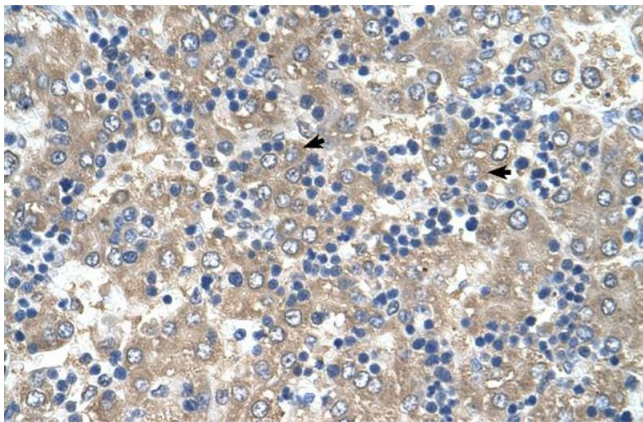
Handling

Format:	Liquid
Concentration:	Lot specific
Buffer:	Liquid. Purified antibody supplied in 1x PBS buffer with 0.09 % (w/v) sodium azide and 2 % sucrose.
Preservative:	Sodium azide
Precaution of Use:	This product contains Sodium azide: a POISONOUS AND HAZARDOUS SUBSTANCE which should be handled by trained staff only.
Handling Advice:	Avoid repeated freeze-thaw cycles.
Storage:	-20 °C
Storage Comment:	For short term use, store at 2-8°C up to 1 week. For long term storage, store at -20°C in small aliquots to prevent freeze-thaw cycles.



Immunohistochemistry

Image 1.



Immunohistochemistry

Image 2. Human Liver



Western Blotting

Image 3. WB Suggested Antibody Titration: 2.5ug/ml
Positive Control: HepG2