

Datasheet for ABIN2784466
anti-C2orf60 antibody (Middle Region)[Go to Product page](#)

1 Image

Overview

Quantity:	100 µL
Target:	C2orf60
Binding Specificity:	Middle Region
Reactivity:	Human, Mouse, Dog, Rat, Guinea Pig, Horse, Rabbit, Cow, Zebrafish (Danio rerio)
Host:	Rabbit
Clonality:	Polyclonal
Conjugate:	This C2orf60 antibody is un-conjugated
Application:	Western Blotting (WB)

Product Details

Immunogen:	The immunogen is a synthetic peptide directed towards the middle region of human C2orf60
Sequence:	HLPSECYDKT DTYGNKDPTA ASRAAQILDR ALKTLAELPE EYRDFYARRM
Predicted Reactivity:	Cow: 93%, Dog: 100%, Guinea Pig: 100%, Horse: 100%, Human: 100%, Mouse: 86%, Rabbit: 100%, Rat: 86%, Zebrafish: 79%
Characteristics:	This is a rabbit polyclonal antibody against C2orf60. It was validated on Western Blot using a cell lysate as a positive control.
Purification:	Affinity Purified

Target Details

Target:	C2orf60
---------	---------

Target Details

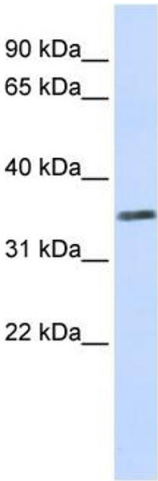
Alternative Name:	C2orf60 (C2orf60 Products)
Background:	The function of the C2orf60 protein remains unknown. Alias Symbols: FLJ37953, MGC70509, hTYW5, C2orf60 Protein Size: 315
Molecular Weight:	36 kDa
Gene ID:	129450
NCBI Accession:	NM_001039693 , NP_001034782
UniProt:	A2RUC4
Pathways:	Ribonucleoside Biosynthetic Process

Application Details

Application Notes:	Optimal working dilutions should be determined experimentally by the investigator.
Comment:	Antigen size: 315 AA
Restrictions:	For Research Use only

Handling

Format:	Liquid
Concentration:	Lot specific
Buffer:	Liquid. Purified antibody supplied in 1x PBS buffer with 0.09 % (w/v) sodium azide and 2 % sucrose.
Preservative:	Sodium azide
Precaution of Use:	This product contains Sodium azide: a POISONOUS AND HAZARDOUS SUBSTANCE which should be handled by trained staff only.
Handling Advice:	Avoid repeated freeze-thaw cycles.
Storage:	-20 °C
Storage Comment:	For short term use, store at 2-8°C up to 1 week. For long term storage, store at -20°C in small aliquots to prevent freeze-thaw cycles.



Western Blotting

Image 1. WB Suggested Anti-C2orf60 Antibody Titration:
0.2-1 ug/ml ELISA Titer: 1:1562500 Positive Control:
Human Placenta