

Datasheet for ABIN2784467  
**anti-C2orf60 antibody (Middle Region)**[Go to Product page](#)

## 1 Image

## Overview

Quantity:	100 µL
Target:	C2orf60
Binding Specificity:	Middle Region
Reactivity:	Human, Mouse, Dog, Rat, Guinea Pig, Horse, Rabbit, Cow, Pig
Host:	Rabbit
Clonality:	Polyclonal
Conjugate:	This C2orf60 antibody is un-conjugated
Application:	Western Blotting (WB)

## Product Details

Immunogen:	The immunogen is a synthetic peptide directed towards the middle region of human C2orf60
Sequence:	NKDPTAASRA AQILDRALKT LAELPEEYRD FYARRMVLHI QDKAYSKNSE
Predicted Reactivity:	Cow: 93%, Dog: 100%, Guinea Pig: 86%, Horse: 93%, Human: 100%, Mouse: 86%, Pig: 93%, Rabbit: 93%, Rat: 93%
Characteristics:	This is a rabbit polyclonal antibody against C2orf60. It was validated on Western Blot using a cell lysate as a positive control.
Purification:	Affinity Purified

## Target Details

Target:	C2orf60
---------	---------

## Target Details

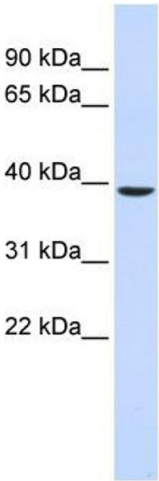
Alternative Name:	C2orf60 ( <a href="#">C2orf60 Products</a> )
Background:	The function of the C2orf60 protein remains unknown. Alias Symbols: FLJ37953, MGC70509, hTYW5, C2orf60 Protein Size: 315
Molecular Weight:	36 kDa
Gene ID:	129450
NCBI Accession:	<a href="#">NM_001039693</a> , <a href="#">NP_001034782</a>
UniProt:	<a href="#">A2RUC4</a>
Pathways:	<a href="#">Ribonucleoside Biosynthetic Process</a>

## Application Details

Application Notes:	Optimal working dilutions should be determined experimentally by the investigator.
Comment:	Antigen size: 315 AA
Restrictions:	For Research Use only

## Handling

Format:	Liquid
Concentration:	Lot specific
Buffer:	Liquid. Purified antibody supplied in 1x PBS buffer with 0.09 % (w/v) sodium azide and 2 % sucrose.
Preservative:	Sodium azide
Precaution of Use:	This product contains Sodium azide: a POISONOUS AND HAZARDOUS SUBSTANCE which should be handled by trained staff only.
Handling Advice:	Avoid repeated freeze-thaw cycles.
Storage:	-20 °C
Storage Comment:	For short term use, store at 2-8°C up to 1 week. For long term storage, store at -20°C in small aliquots to prevent freeze-thaw cycles.



Western Blotting

**Image 1.** WB Suggested Anti-C2orf60 Antibody Titration:  
0.2-1 ug/ml ELISA Titer: 1:62500 Positive Control: Human  
Muscle