



[Go to Product page](#)

Datasheet for ABIN2784468
anti-INTS12 antibody (C-Term)

1 Image

Overview

Quantity:	100 µL
Target:	INTS12
Binding Specificity:	C-Term
Reactivity:	Human, Mouse, Rat, Cow, Dog, Guinea Pig, Horse, Rabbit, Zebrafish (Danio rerio)
Host:	Rabbit
Clonality:	Polyclonal
Application:	Western Blotting (WB)

Product Details

Immunogen:	The immunogen is a synthetic peptide directed towards the C-terminal region of Rat Ints12
Sequence:	SGNGNSATAG PTGSITSKTT SETSSSTSAS LKGPTSQESQ LNAMKRLQMV
Predicted Reactivity:	Cow: 100%, Dog: 100%, Guinea Pig: 100%, Horse: 100%, Human: 100%, Mouse: 100%, Rabbit: 100%, Rat: 100%, Zebrafish: 91%
Characteristics:	This is a rabbit polyclonal antibody against Ints12. It was validated on Western Blot.
Purification:	Affinity Purified

Target Details

Target:	INTS12
Alternative Name:	Ints12 (INTS12 Products)
Background:	Ints12 is a component of the Integrator complex, a complex involved in the small nuclear RNAs

Target Details

(snRNA) U1 and U2 transcription and in their 3'-box-dependent processing. The Integrator complex is associated with the C-terminal domain (CTD) of RNA polymerase II largest subunit (POLR2A) and is recruited to the U1 and U2 snRNAs genes.

Alias Symbols: Phf22

Protein Size: 461

Molecular Weight: 50 kDa

Gene ID: 295448

NCBI Accession: [NM_001007640](#), [NP_001007641](#)

UniProt: [Q68FR3](#)

Application Details

Application Notes: Optimal working dilution should be determined by the investigator.

Restrictions: For Research Use only

Handling

Format: Liquid

Concentration: 1 mg/mL

Buffer: Liquid. Purified antibody supplied in 1x PBS buffer with 0.09 % (w/v) sodium azide and 2 % sucrose.

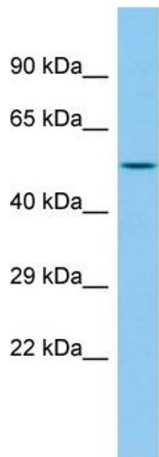
Preservative: Sodium azide

Precaution of Use: This product contains Sodium azide: a POISONOUS AND HAZARDOUS SUBSTANCE which should be handled by trained staff only.

Handling Advice: Avoid repeat freeze-thaw cycles.

Storage: -20 °C

Storage Comment: For short term use, store at 2-8°C up to 1 week. For long term storage, store at -20°C in small aliquots to prevent freeze-thaw cycles.



Host: Rabbit
Target Name: Ints12
Sample Tissue: Rat Pancreas Lysate
Antibody Dilution: 1.0µg/ml

Western Blotting

Image 1. Host: Rabbit Target Name: Ints12 Sample Type: Rat Pancreas lysates Antibody Dilution: 1.0ug/ml