

Datasheet for ABIN2784471  
**anti-PHF13 antibody (N-Term)**



[Go to Product page](#)

1 Image

## Overview

Quantity:	100 µL
Target:	PHF13
Binding Specificity:	N-Term
Reactivity:	Human, Mouse, Rat, Guinea Pig, Horse, Cow, Rabbit, Saccharomyces cerevisiae
Host:	Rabbit
Clonality:	Polyclonal
Conjugate:	This PHF13 antibody is un-conjugated
Application:	Western Blotting (WB)

## Product Details

Immunogen:	The immunogen is a synthetic peptide directed towards the N terminal region of human PHF13
Sequence:	LAYAGYIPYP KEELPLRSSP SPANSTAGTI DSDGWDAGFS DIASSVPLPV
Predicted Reactivity:	Cow: 93%, Guinea Pig: 100%, Horse: 100%, Human: 100%, Mouse: 100%, Rabbit: 93%, Rat: 100%, Yeast: 100%
Characteristics:	This is a rabbit polyclonal antibody against PHF13. It was validated on Western Blot using a cell lysate as a positive control.
Purification:	Affinity Purified

## Target Details

Target:	PHF13
---------	-------

## Target Details

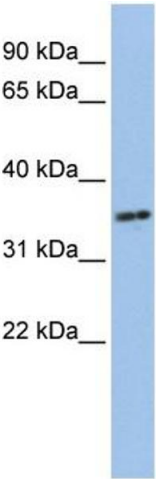
Alternative Name:	PHF13 ( <a href="#">PHF13 Products</a> )
Background:	PHF13 contains 1 PHD-type zinc finger. The function of the PHF13 protein remains unknown. Alias Symbols: MGC43399, PHF5, SPOC1 Protein Interaction Partner: UBC, CPTP, Protein Size: 300
Molecular Weight:	33 kDa
Gene ID:	148479
NCBI Accession:	<a href="#">NM_153812</a> , <a href="#">NP_722519</a>
UniProt:	<a href="#">Q86YI8</a>

## Application Details

Application Notes:	Optimal working dilutions should be determined experimentally by the investigator.
Comment:	Antigen size: 300 AA
Restrictions:	For Research Use only

## Handling

Format:	Liquid
Concentration:	Lot specific
Buffer:	Liquid. Purified antibody supplied in 1x PBS buffer with 0.09 % (w/v) sodium azide and 2 % sucrose.
Preservative:	Sodium azide
Precaution of Use:	This product contains Sodium azide: a POISONOUS AND HAZARDOUS SUBSTANCE which should be handled by trained staff only.
Handling Advice:	Avoid repeated freeze-thaw cycles.
Storage:	-20 °C
Storage Comment:	For short term use, store at 2-8°C up to 1 week. For long term storage, store at -20°C in small aliquots to prevent freeze-thaw cycles.



**Western Blotting**

**Image 1.** WB Suggested Anti-PHF13 Antibody Titration: 0.2-1 ug/ml ELISA Titer: 1:312500 Positive Control: Jurkat cell lysate