

Datasheet for ABIN2784472

anti-PHF23 antibody (N-Term)**1** Image**1** Publication[Go to Product page](#)

Overview

Quantity:	100 µL
Target:	PHF23
Binding Specificity:	N-Term
Reactivity:	Human, Cow, Mouse, Rat, Dog, Pig, Rabbit
Host:	Rabbit
Clonality:	Polyclonal
Application:	Western Blotting (WB)

Product Details

Immunogen:	The immunogen is a synthetic peptide directed towards the N terminal region of human PHF23
Sequence:	LEAMAEPSPE DPPPTLKPET QPPEKRRRTI EDFNKFCSFV LAYAGYIPPS
Predicted Reactivity:	Cow: 100%, Dog: 100%, Human: 100%, Mouse: 100%, Pig: 100%, Rabbit: 100%, Rat: 100%
Characteristics:	This is a rabbit polyclonal antibody against PHF23. It was validated on Western Blot using a cell lysate as a positive control.
Purification:	Affinity Purified

Target Details

Target:	PHF23
Alternative Name:	PHF23 (PHF23 Products)
Background:	PHF23 contains 1 PHD-type zinc finger. It belongs to the PHF23 family. A chromosomal

Target Details

aberration involving PHF23, translocation t (11,17)(p15,p13) with NUP98, is found in a patient with acute myeloid leukemia (AML).

Alias Symbols: FLJ16355, FLJ22884, MGC2941, hJUNE-1b

Protein Interaction Partner: UBC, LRSAM1, PRSS23,

Protein Size: 403

Molecular Weight: 44 kDa

Gene ID: 79142

NCBI Accession: [NM_024297](#), [NP_077273](#)

UniProt: [Q9BUL5](#)

Application Details

Application Notes: Optimal working dilutions should be determined experimentally by the investigator.

Comment: Antigen size: 403 AA

Restrictions: For Research Use only

Handling

Format: Liquid

Concentration: Lot specific

Buffer: Liquid. Purified antibody supplied in 1x PBS buffer with 0.09 % (w/v) sodium azide and 2 % sucrose.

Preservative: Sodium azide

Precaution of Use: This product contains Sodium azide: a POISONOUS AND HAZARDOUS SUBSTANCE which should be handled by trained staff only.

Handling Advice: Avoid repeated freeze-thaw cycles.

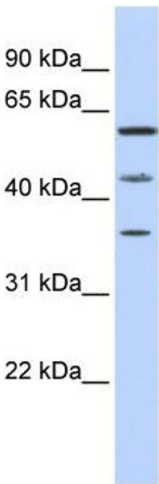
Storage: -20 °C

Storage Comment: For short term use, store at 2-8°C up to 1 week. For long term storage, store at -20°C in small aliquots to prevent freeze-thaw cycles.

Publications

Product cited in: Jena, Janjanam, Naru, Kumar, Kumar, Singh, Mohapatra, Kola, Anand, Jaswal, Verma, Malakar,

Dang, Kaushik, Reddy, Mohanty: "DIGE based proteome analysis of mammary gland tissue in water buffalo (Bubalus bubalis): Lactating vis-a-vis heifer." in: **Journal of proteomics**, Vol. 119C, pp. 100-111, (2015) ([PubMed](#)).



Western Blotting

Image 1. WB Suggested Anti-PHF23 Antibody Titration: 0.2-1 ug/ml ELISA Titer: 1:312500 Positive Control: MCF7 cell lysate