

Datasheet for ABIN2784479

anti-SETD6 antibody (Middle Region)[Go to Product page](#)**1** Image

Overview

Quantity:	100 µL
Target:	SETD6
Binding Specificity:	Middle Region
Reactivity:	Human, Pig, Rabbit
Host:	Rabbit
Clonality:	Polyclonal
Conjugate:	This SETD6 antibody is un-conjugated
Application:	Western Blotting (WB)

Product Details

Immunogen:	The immunogen is a synthetic peptide directed towards the middle region of human SETD6
Sequence:	ELKDQDGGGD DKREEGSLTI TNIPKLKASW RQLLQNSVLL TLQTYATDLK
Predicted Reactivity:	Human: 100%, Pig: 86%, Rabbit: 87%
Characteristics:	This is a rabbit polyclonal antibody against SETD6. It was validated on Western Blot using a cell lysate as a positive control.
Purification:	Affinity Purified

Target Details

Target:	SETD6
Alternative Name:	SETD6 (SETD6 Products)

Target Details

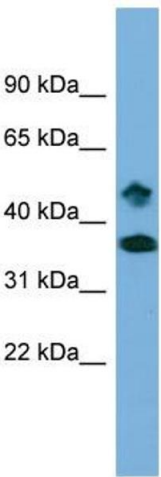
Background:	The function of this protein remains unknown. Alias Symbols: FLJ21148 Protein Interaction Partner: UBC, RELA, Protein Size: 449
Molecular Weight:	51 kDa
Gene ID:	79918
NCBI Accession:	NM_024860 , NP_079136

Application Details

Application Notes:	Optimal working dilutions should be determined experimentally by the investigator.
Comment:	Antigen size: 449 AA
Restrictions:	For Research Use only

Handling

Format:	Liquid
Concentration:	Lot specific
Buffer:	Liquid. Purified antibody supplied in 1x PBS buffer with 0.09 % (w/v) sodium azide and 2 % sucrose.
Preservative:	Sodium azide
Precaution of Use:	This product contains Sodium azide: a POISONOUS AND HAZARDOUS SUBSTANCE which should be handled by trained staff only.
Handling Advice:	Avoid repeated freeze-thaw cycles.
Storage:	-20 °C
Storage Comment:	For short term use, store at 2-8°C up to 1 week. For long term storage, store at -20°C in small aliquots to prevent freeze-thaw cycles.



Western Blotting

Image 1. WB Suggested Anti-SETD6 Antibody Titration:
0.2-1 ug/ml Positive Control: THP-1 cell lysate