

Datasheet for ABIN2784482
anti-PHC2 antibody (N-Term)[Go to Product page](#)

1 Image

Overview

Quantity:	100 µL
Target:	PHC2 (Phc2)
Binding Specificity:	N-Term
Reactivity:	Human, Mouse, Rat, Horse, Rabbit, Cow, Dog, Guinea Pig, Zebrafish (Danio rerio)
Host:	Rabbit
Clonality:	Polyclonal
Conjugate:	This PHC2 antibody is un-conjugated
Application:	Western Blotting (WB)

Product Details

Immunogen:	The immunogen is a synthetic peptide directed towards the N terminal region of human PHC2
Sequence:	GGSGRPTGPQ ISVYSGIPDR QTVQVIQQAL HRQPSTAAQY LQQMYAAQQQ
Predicted Reactivity:	Cow: 100%, Dog: 100%, Guinea Pig: 100%, Horse: 100%, Human: 100%, Mouse: 100%, Rabbit: 100%, Rat: 100%, Zebrafish: 93%
Characteristics:	This is a rabbit polyclonal antibody against PHC2. It was validated on Western Blot.
Purification:	Affinity Purified

Target Details

Target:	PHC2 (Phc2)
Alternative Name:	PHC2 (Phc2 Products)

Target Details

Background:	<p>In <i>Drosophila melanogaster</i>, the 'Polycomb' group (PcG) of genes are part of a cellular memory system that is responsible for the stable inheritance of gene activity. PcG proteins form a large multimeric, chromatin-associated protein complex. The protein encoded by this gene has homology to the <i>Drosophila</i> PcG protein 'polyhomeotic' (Ph) and is known to heterodimerize with EDR1 and colocalize with BMI1 in interphase nuclei of human cells. The specific function in human cells has not yet been determined. Two transcript variants encoding different isoforms have been found for this gene.</p> <p>Alias Symbols: EDR2, HPH2, MGC163502, PH2</p> <p>Protein Interaction Partner: FAM74A4, FAM74A1, FAM13C, FAM124A, MAGEB6, ZMAT2, ZNF417, MAB21L3, SSX2IP, TRIM41, ZGPAT, L3MBTL3, PCGF5, SPATC1L, FAM161A, ENKD1, KBTBD7, SYT16, THAP7, AEN, CARD9, CBX8, C1orf109, SFMBT1, PRPF31, PPP1R16B, KAT5, PCGF3, RWDD2B, ZBTB24, MORF4L2, RBM39, AP1</p> <p>Protein Size: 858</p>
Molecular Weight:	91 kDa
Gene ID:	1912
NCBI Accession:	NM_198040 , NP_932157
UniProt:	Q8IXK0

Application Details

Application Notes:	Optimal working dilutions should be determined experimentally by the investigator.
Comment:	Antigen size: 858 AA
Restrictions:	For Research Use only

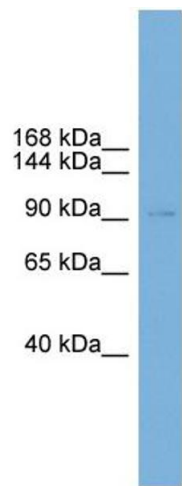
Handling

Format:	Liquid
Concentration:	Lot specific
Buffer:	Liquid. Purified antibody supplied in 1x PBS buffer with 0.09 % (w/v) sodium azide and 2 % sucrose.
Preservative:	Sodium azide
Precaution of Use:	This product contains Sodium azide: a POISONOUS AND HAZARDOUS SUBSTANCE which should be handled by trained staff only.

Handling

Handling Advice:	Avoid repeated freeze-thaw cycles.
Storage:	-20 °C
Storage Comment:	For short term use, store at 2-8°C up to 1 week. For long term storage, store at -20°C in small aliquots to prevent freeze-thaw cycles.

Validation report #103398 for Immunocytochemistry (ICC)



Western Blotting

Image 1. WB Suggested Anti-PHC2 Antibody Titration: 0.2-1 ug/ml ELISA Titer: 1:312500 Positive Control: MCF7 cell lysate