



[Go to Product page](#)

Datasheet for ABIN2784484  
**anti-RPS12 antibody (C-Term)**

3 Images

Overview

Quantity:	100 µL
Target:	RPS12
Binding Specificity:	C-Term
Reactivity:	Human, Mouse, Rat, Zebrafish (Danio rerio), Cow, Dog, Guinea Pig, Horse, Rabbit, Sheep
Host:	Rabbit
Clonality:	Polyclonal
Conjugate:	This RPS12 antibody is un-conjugated
Application:	Western Blotting (WB)

Product Details

Immunogen:	The immunogen is a synthetic peptide directed towards the C-terminal region of Rps12
Sequence:	NKKLGEWVGL CKIDREGKPR KVVGCSVCVVV KDYGKESQAK DVIEEYFKCK
Predicted Reactivity:	Cow: 100%, Dog: 100%, Guinea Pig: 100%, Horse: 100%, Human: 100%, Mouse: 100%, Rabbit: 100%, Rat: 100%, Sheep: 100%, Zebrafish: 100%
Characteristics:	This is a rabbit polyclonal antibody against Rps12. It was validated on Western Blot.
Purification:	Affinity Purified

Target Details

Target:	RPS12
Alternative Name:	Rps12 ( <a href="#">RPS12 Products</a> )

## Target Details

---

Background: The function of this protein remains unknown.  
Alias Symbols: MGC102111, MGC102112, MGC102499, MGC117504  
Protein Interaction Partner: Eed, Rara,  
Protein Size: 132

---

Molecular Weight: 14 kDa

---

Gene ID: 20042

---

NCBI Accession: [NM\\_011295](#), [NP\\_035425](#)

---

UniProt: [P63323](#)

---

## Application Details

---

Application Notes: Optimal working dilutions should be determined experimentally by the investigator.

---

Comment: Antigen size: 132 AA

---

Restrictions: For Research Use only

---

## Handling

---

Format: Liquid

---

Concentration: Lot specific

---

Buffer: Liquid. Purified antibody supplied in 1x PBS buffer with 0.09 % (w/v) sodium azide and 2 % sucrose.

---

Preservative: Sodium azide

---

Precaution of Use: This product contains Sodium azide: a POISONOUS AND HAZARDOUS SUBSTANCE which should be handled by trained staff only.

---

Handling Advice: Avoid repeated freeze-thaw cycles.

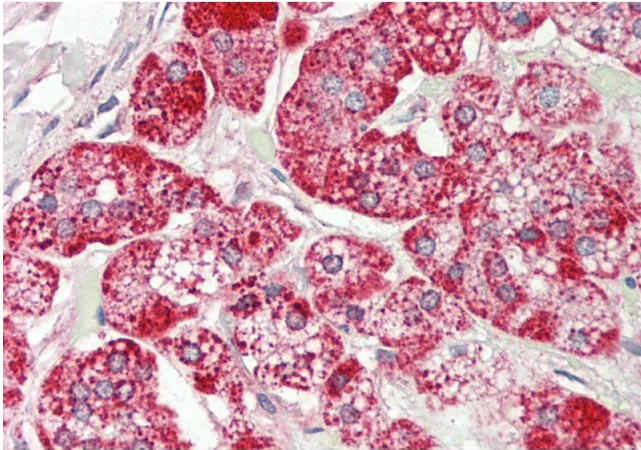
---

Storage: -20 °C

---

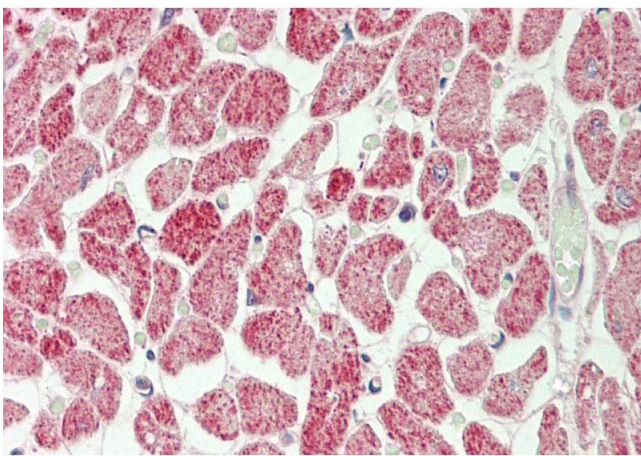
Storage Comment: For short term use, store at 2-8°C up to 1 week. For long term storage, store at -20°C in small aliquots to prevent freeze-thaw cycles.

---



### Immunohistochemistry

**Image 1.** Rabbit Anti-Rps12 antibody Catalog Number: ARP51260 Formalin Fixed Paraffin Embedded Tissue: Human Adrenal Primary antibody Concentration: 1:100 Secondary Antibody: Donkey anti-Rabbit-Cy3 Secondary Antibody Concentration: 1:200 Magnification: 20x Exposure Time: 0.5-2.0sec



### Immunohistochemistry

**Image 2.** Rabbit Anti-Rps12 antibody Catalog Number: ARP51260 Formalin Fixed Paraffin Embedded Tissue: Human Heart Primary antibody Concentration: 1:100 Secondary Antibody: Donkey anti-Rabbit-Cy3 Secondary Antibody Concentration: 1:200 Magnification: 20x Exposure Time: 0.5-2.0sec



### Western Blotting

**Image 3.** WB Suggested Anti-Rps12 Antibody Titration: 1.0 ug/ml Positive Control: Mouse Pancreas