

Datasheet for ABIN2784490
anti-GABARAP antibody (N-Term)



[Go to Product page](#)

4 Images

Overview

Quantity:	100 µL
Target:	GABARAP
Binding Specificity:	N-Term
Reactivity:	Human, Mouse, Rat, Zebrafish (Danio rerio), Cow, Dog, Pig, Rabbit, Guinea Pig, Horse
Host:	Rabbit
Clonality:	Polyclonal
Conjugate:	This GABARAP antibody is un-conjugated
Application:	Western Blotting (WB), Immunohistochemistry (IHC)

Product Details

Immunogen:	The immunogen is a synthetic peptide directed towards the N terminal region of human GABARAP
Sequence:	IRKKYPDRVP VIVEKAPKAR IGDLDKKKYL VPSDLTVGQF YFLIRKRIHL
Predicted Reactivity:	Cow: 100%, Dog: 100%, Guinea Pig: 79%, Horse: 79%, Human: 100%, Mouse: 100%, Pig: 100%, Rabbit: 100%, Rat: 100%, Zebrafish: 100%
Characteristics:	This is a rabbit polyclonal antibody against GABARAP. It was validated on Western Blot.
Purification:	Affinity Purified

Target Details

Target:	GABARAP
---------	---------

Target Details

Alternative Name:	GABARAP (GABARAP Products)
Background:	<p>Gamma-aminobutyric acid A receptors [GABA(A) receptors] are ligand-gated chloride channels that mediate inhibitory neurotransmission. GABA(A) receptor-associated protein (GABARAP) is highly positively charged in its N-terminus and shares sequence similarity with light chain-3 of microtubule-associated proteins 1A and 1B. This protein clusters neurotransmitter receptors by mediating interaction with the cytoskeleton.</p> <p>Alias Symbols: FLJ25768, MGC120154, MGC120155, MM46, ATG8A</p> <p>Protein Interaction Partner: MUL1, UBC, SQSTM1, TAX1BP1, NBR1, ATG101, ATG13, SRPK2, SRPK1, MAPK15, MLH1, BNIP3L, KATNB1, RB1CC1, ULK2, ULK1, OPTN, TBC1D25, DVL2, ATG7, FKBP4, MAP1LC3C, DYX1C1, NCOA7, MAP1LC3B, TBC1D15, ATG3, PI4K2A, ANKFY1, GABARAPL1, ATG4B, FBNP1, GABARAPL2, TECPR2</p> <p>Protein Size: 117</p>
Molecular Weight:	14 kDa
Gene ID:	11337
NCBI Accession:	NM_007278 , NP_009209
UniProt:	O95166
Pathways:	Autophagy

Application Details

Application Notes:	Optimal working dilutions should be determined experimentally by the investigator.
Comment:	Antigen size: 117 AA
Restrictions:	For Research Use only

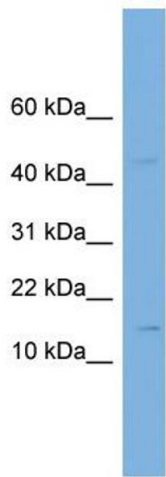
Handling

Format:	Liquid
Concentration:	Lot specific
Buffer:	Liquid. Purified antibody supplied in 1x PBS buffer with 0.09 % (w/v) sodium azide and 2 % sucrose.
Preservative:	Sodium azide
Precaution of Use:	This product contains Sodium azide: a POISONOUS AND HAZARDOUS SUBSTANCE which should be handled by trained staff only.

Handling

Handling Advice:	Avoid repeated freeze-thaw cycles.
Storage:	-20 °C
Storage Comment:	For short term use, store at 2-8°C up to 1 week. For long term storage, store at -20°C in small aliquots to prevent freeze-thaw cycles.

Images



GABARAP

Western Blotting

Image 1. WB Suggested Anti-GABARAP Antibody Titration: 0.2-1 ug/ml ELISA Titer: 1:1562500 Positive Control: HT1080 cell lysate GABARAP is supported by BioGPS gene expression data to be expressed in HT1080

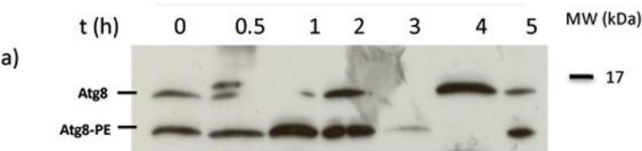
Western Blotting

Image 2. Autophagy is induced by starvation **Sample:** Newborn *M. Sexta* larvae

Lanes: Newborn larvae were treated for 0,0.5,1,2,3,4, and 5 h

Protein Loaded: 100 ug per lane

Submitted by: Dra. Helena Porta Ducoing, Instituto de Biotecnologia, UNAM



See Immunoblot 2 Data and Customer Feedback tab for more information.



Western Blotting

Image 3. WB Suggested Anti-GABARAP

Antibody Titration: 0.2-1 µg/mL ELISA Titer: 1:1562500

Positive Control: HT1080 cell lysate

GABARAP is supported by BioGPS gene expression data to be expressed in HT1080

Please check the [product details page](#) for more images. Overall 4 images are available for ABIN2784490.