

Datasheet for ABIN2784500

anti-P2RY1 antibody (N-Term)**2** Images**1** Publication[Go to Product page](#)

Overview

Quantity:	100 µL
Target:	P2RY1
Binding Specificity:	N-Term
Reactivity:	Human, Rat, Mouse, Dog, Cow, Guinea Pig, Rabbit, Horse, Zebrafish (Danio rerio)
Host:	Rabbit
Clonality:	Polyclonal
Conjugate:	This P2RY1 antibody is un-conjugated
Application:	Western Blotting (WB)

Product Details

Immunogen:	The immunogen is a synthetic peptide directed towards the N terminal region of human P2RY1
Sequence:	VAIWMFVFHM KPWSGISVYM FNLALADFLY VLTLPALIFY YFNKTDWIFG
Predicted Reactivity:	Cow: 100%, Dog: 100%, Guinea Pig: 100%, Horse: 100%, Human: 100%, Mouse: 100%, Rabbit: 100%, Rat: 100%, Zebrafish: 92%
Characteristics:	This is a rabbit polyclonal antibody against P2RY1. It was validated on Western Blot using a cell lysate as a positive control.
Purification:	Affinity Purified

Target Details

Target:	P2RY1
---------	-------

Target Details

Alternative Name:	P2RY1 (P2RY1 Products)
Background:	<p>The product of this gene belongs to the family of G-protein coupled receptors. This family has several receptor subtypes with different pharmacological selectivity, which overlaps in some cases, for various adenosine and uridine nucleotides. This receptor functions as a receptor for extracellular ATP and ADP. In platelets binding to ADP leads to mobilization of intracellular calcium ions via activation of phospholipase C, a change in platelet shape, and probably to platelet aggregation. [provided by RefSeq, Jul 2008].</p> <p>Alias Symbols: P2y1, P2Y1</p> <p>Protein Interaction Partner: SLC9A3R2, SLC9A3R1, ADORA1,</p> <p>Protein Size: 373</p>
Molecular Weight:	42 kDa
Gene ID:	5028
NCBI Accession:	NM_002563 , NP_002554
UniProt:	P47900
Pathways:	Regulation of Carbohydrate Metabolic Process , Feeding Behaviour

Application Details

Application Notes:	Optimal working dilutions should be determined experimentally by the investigator.
Comment:	Antigen size: 373 AA
Restrictions:	For Research Use only

Handling

Format:	Liquid
Concentration:	Lot specific
Buffer:	Liquid. Purified antibody supplied in 1x PBS buffer with 0.09 % (w/v) sodium azide and 2 % sucrose.
Preservative:	Sodium azide
Precaution of Use:	This product contains Sodium azide: a POISONOUS AND HAZARDOUS SUBSTANCE which should be handled by trained staff only.
Handling Advice:	Avoid repeated freeze-thaw cycles.

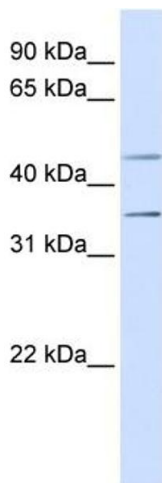
Handling

Storage:	-20 °C
Storage Comment:	For short term use, store at 2-8°C up to 1 week. For long term storage, store at -20°C in small aliquots to prevent freeze-thaw cycles.

Publications

Product cited in:	Ewing, Chu, Elisma, Li, Taylor, Climie, McBroom-Cerajewski, Robinson, OConnor, Li, Taylor, Dharsee, Ho, Heilbut, Moore, Zhang, Ornatsky, Bukhman, Ethier, Sheng, Vasilescu, Abu-Farha, Lambert, Duewel et al.: "Large-scale mapping of human protein-protein interactions by mass spectrometry. ..." in: Molecular systems biology , Vol. 3, pp. 89, (2007) (PubMed).
-------------------	------------------------------------------------------------------------------------------------------------------------------------------------------------------------------------------------------------------------------------------------------------------------------------------------------------------------------------------------------------------------------------------------

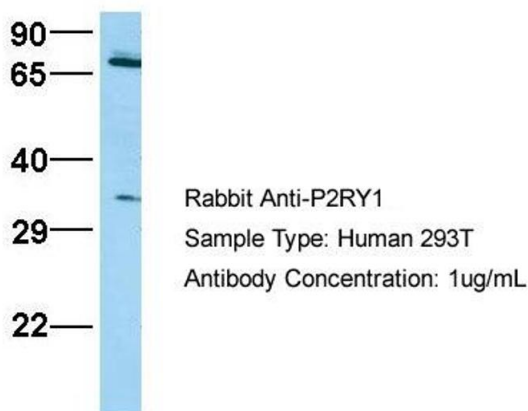
Images



Western Blotting

Image 1. WB Suggested Anti-P2RY1 Antibody Titration: 0.2-1 ug/ml ELISA Titer: 1:312500 Positive Control: Human Fetal Muscle

P2RY1



Western Blotting

Image 2. Host: Rabbit
Target Name: P2RY1
Sample Tissue: 293T
Antibody Dilution: 1.0 µg/mL