

Datasheet for ABIN2784504
anti-GPSM2 antibody (N-Term)

8 Images

[Go to Product page](#)

Overview

Quantity:	100 µL
Target:	GPSM2
Binding Specificity:	N-Term
Reactivity:	Human, Mouse, Rat, Dog, Cow, Horse, Rabbit, Pig, Zebrafish (Danio rerio), Guinea Pig
Host:	Rabbit
Clonality:	Polyclonal
Conjugate:	This GPSM2 antibody is un-conjugated
Application:	Western Blotting (WB), Immunohistochemistry (IHC), Immunofluorescence (IF)

Product Details

Immunogen:	The immunogen is a synthetic peptide directed towards the N terminal region of human GPSM2
Sequence:	YFYLHDYAKA LEYHHHDLTL ARTIGDQLGE AKASGNLGNT LKVLGNFDEA
Predicted Reactivity:	Cow: 100%, Dog: 100%, Guinea Pig: 86%, Horse: 100%, Human: 100%, Mouse: 100%, Pig: 93%, Rabbit: 100%, Rat: 100%, Zebrafish: 100%
Characteristics:	This is a rabbit polyclonal antibody against GPSM2. It was validated on Western Blot using a cell lysate as a positive control.
Purification:	Affinity Purified

Target Details

Target:	GPSM2
---------	-------

Target Details

Alternative Name:	GPSM2 (GPSM2 Products)
Background:	<p>Heterotrimeric G proteins transduce extracellular signals received by cell surface receptors into integrated cellular responses. GPSM2 belongs to a group of proteins that modulate activation of G proteins. Heterotrimeric G proteins transduce extracellular signals received by cell surface receptors into integrated cellular responses. GPSM2 belongs to a group of proteins that modulate activation of G proteins (Blumer et al., 2002 [PubMed 11832491]). [supplied by OMIM].</p> <p>Alias Symbols: LGN, Pins, PINS, DFNB82</p> <p>Protein Interaction Partner: UBC, GLIS2, SUMO1, INSC, GPSM2, HRAS, NUMA1, GNAI3, GNAI2, GNAO1, GNAI1,</p> <p>Protein Size: 677</p>
Molecular Weight:	76 kDa
Gene ID:	29899
NCBI Accession:	NM_013296 , NP_037428
UniProt:	P81274
Pathways:	Regulation of G-Protein Coupled Receptor Protein Signaling

Application Details

Application Notes:	Optimal working dilutions should be determined experimentally by the investigator.
Comment:	Antigen size: 677 AA
Restrictions:	For Research Use only

Handling

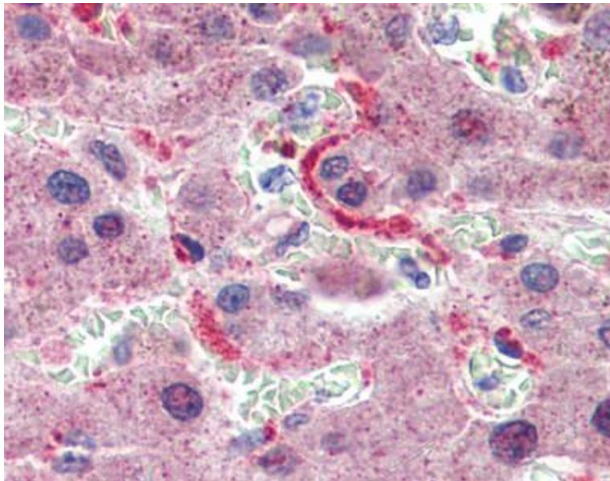
Format:	Liquid
Concentration:	Lot specific
Buffer:	Liquid. Purified antibody supplied in 1x PBS buffer with 0.09 % (w/v) sodium azide and 2 % sucrose.
Preservative:	Sodium azide
Precaution of Use:	This product contains Sodium azide: a POISONOUS AND HAZARDOUS SUBSTANCE which should be handled by trained staff only.
Handling Advice:	Avoid repeated freeze-thaw cycles.

Handling

Storage: -20 °C

Storage Comment: For short term use, store at 2-8°C up to 1 week. For long term storage, store at -20°C in small aliquots to prevent freeze-thaw cycles.

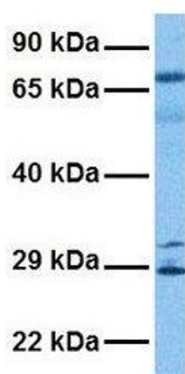
Images



Immunohistochemistry

Image 1.

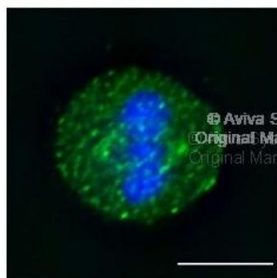
GPSM2



Western Blotting

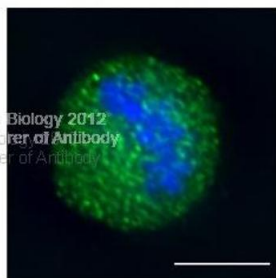
Image 2. Host: Rabbit Target Name: GPSM2 Sample Tissue: Human Lung Tumor Antibody Dilution: 1.0ug/ml

DNA anti-LGN/GPSM2



MeOH Fixation

Application data in forum



Formaldehyde Fixation

Immunofluorescence

Image 3. GPSM2 antibody - N-terminal region in human cell lines with GFP-LGN fusion using Immunofluorescence.

Please check the [product details page](#) for more images. Overall 8 images are available for ABIN2784504.