



Datasheet for ABIN2784506
anti-MGP antibody (Middle Region)



[Go to Product page](#)

2 Images

Overview

Quantity:	100 µL
Target:	MGP
Binding Specificity:	Middle Region
Reactivity:	Human, Rat, Cow, Guinea Pig
Host:	Rabbit
Clonality:	Polyclonal
Conjugate:	This MGP antibody is un-conjugated
Application:	Western Blotting (WB), Immunohistochemistry (IHC)

Product Details

Immunogen:	The immunogen is a synthetic peptide directed towards the middle region of human MGP
Sequence:	INRRNANTFI SPQQRWRKAV QERIRERSKP VHELNREACD DYRLCERYAM
Predicted Reactivity:	Cow: 79%, Guinea Pig: 86%, Human: 100%, Rat: 85%
Characteristics:	This is a rabbit polyclonal antibody against MGP. It was validated on Western Blot using a cell lysate as a positive control.
Purification:	Affinity Purified

Target Details

Target:	MGP
Alternative Name:	MGP (MGP Products)

Target Details

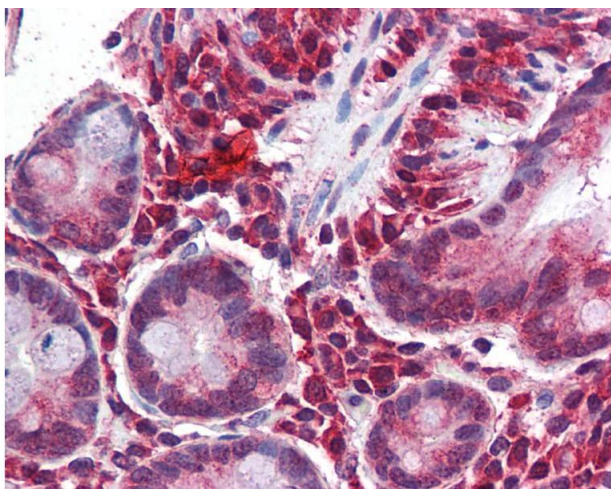
Background:	MGP is associated with the organic matrix of bone and cartilage. MGP is thought to act as an inhibitor of bone formation. Alias Symbols: GIG36, MGLAP, NTI Protein Interaction Partner: BMP2, Protein Size: 103
Molecular Weight:	12 kDa
Gene ID:	4256
NCBI Accession:	NM_000900 , NP_000891
UniProt:	P08493

Application Details

Application Notes:	Optimal working dilutions should be determined experimentally by the investigator.
Comment:	Antigen size: 103 AA
Restrictions:	For Research Use only

Handling

Format:	Liquid
Concentration:	Lot specific
Buffer:	Liquid. Purified antibody supplied in 1x PBS buffer with 0.09 % (w/v) sodium azide and 2 % sucrose.
Preservative:	Sodium azide
Precaution of Use:	This product contains Sodium azide: a POISONOUS AND HAZARDOUS SUBSTANCE which should be handled by trained staff only.
Handling Advice:	Avoid repeated freeze-thaw cycles.
Storage:	-20 °C
Storage Comment:	For short term use, store at 2-8°C up to 1 week. For long term storage, store at -20°C in small aliquots to prevent freeze-thaw cycles.



Immunohistochemistry

Image 1.



Western Blotting

Image 2. WB Suggested Anti-MGP Antibody Titration: 0.2-1 ug/ml ELISA Titer: 1:312500 Positive Control: Jurkat cell lysate