



[Go to Product page](#)

Datasheet for ABIN2784507

anti-NDUFA10L1 antibody (C-Term)

1 Image

Overview

Quantity:	100 µL
Target:	NDUFA10L1
Binding Specificity:	C-Term
Reactivity:	Cow, Guinea Pig, Horse, Human, Mouse, Pig, Rat
Host:	Rabbit
Clonality:	Polyclonal
Application:	Western Blotting (WB)

Product Details

Immunogen:	The immunogen is a synthetic peptide directed towards the C-terminal region of Rat Ndufa10l1
Sequence:	KREVLNYTTV PVYLPEITIG AHQGSRIYDS FRELPGRKYA PGINADVGDK
Predicted Reactivity:	Cow: 83%, Guinea Pig: 79%, Horse: 79%, Human: 100%, Mouse: 86%, Pig: 100%, Rat: 79%
Characteristics:	This is a rabbit polyclonal antibody against Ndufa10l1. It was validated on Western Blot.
Purification:	Affinity Purified

Target Details

Target:	NDUFA10L1
Alternative Name:	Ndufa10l1 (NDUFA10L1 Products)
Background:	The function of this protein remains unknown. Alias Symbols: Ndufa10

Target Details

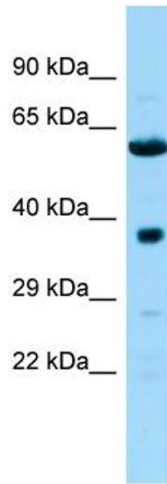
	Protein Size: 355
Molecular Weight:	39 kDa
Gene ID:	316632
NCBI Accession:	NM_182671 , NP_872612
UniProt:	Q561S0

Application Details

Application Notes:	Optimal working dilutions should be determined experimentally by the investigator.
Comment:	Antigen size: 355 AA
Restrictions:	For Research Use only

Handling

Format:	Liquid
Concentration:	Lot specific
Buffer:	Liquid. Purified antibody supplied in 1x PBS buffer with 0.09 % (w/v) sodium azide and 2 % sucrose.
Preservative:	Sodium azide
Precaution of Use:	This product contains Sodium azide: a POISONOUS AND HAZARDOUS SUBSTANCE which should be handled by trained staff only.
Handling Advice:	Avoid repeated freeze-thaw cycles.
Storage:	-20 °C
Storage Comment:	For short term use, store at 2-8°C up to 1 week. For long term storage, store at -20°C in small aliquots to prevent freeze-thaw cycles.



Western Blotting

Image 1. Host: Rabbit Target Name: Ndufa10l1 Sample Type: Rat Pancreas lysates Antibody Dilution: 1.0ug/ml