

Datasheet for ABIN2784512
anti-CD42b antibody (C-Term)[Go to Product page](#)

2 Images

1 Publication

Overview

Quantity:	100 µL
Target:	CD42b (GP1BA)
Binding Specificity:	C-Term
Reactivity:	Human, Mouse, Rat, Dog, Horse, Rabbit
Host:	Rabbit
Clonality:	Polyclonal
Conjugate:	This CD42b antibody is un-conjugated
Application:	Western Blotting (WB)

Product Details

Immunogen:	The immunogen is a synthetic peptide directed towards the C terminal region of human GP1BA
Sequence:	RGSLPTRSS LFLWVRPNGR VGPLVAGRRP SALSQGRGQD LLSTVSIRYS
Predicted Reactivity:	Dog: 77%, Horse: 92%, Human: 100%, Mouse: 86%, Rabbit: 79%, Rat: 86%
Characteristics:	This is a rabbit polyclonal antibody against GP1BA. It was validated on Western Blot using a cell lysate as a positive control.
Purification:	Affinity Purified

Target Details

Target:	CD42b (GP1BA)
Alternative Name:	GP1BA (GP1BA Products)

Target Details

Background:	<p>Glycoprotein Ib (GP Ib) is a platelet surface membrane glycoprotein composed of a heterodimer, an alpha chain and a beta chain, that are linked by disulfide bonds. The Gp Ib functions as a receptor for von Willebrand factor (VWF). The complete receptor complex includes noncovalent association of the alpha and beta subunits with platelet glycoprotein IX and platelet glycoprotein V. The binding of the GP Ib-IX-V complex to VWF facilitates initial platelet adhesion to vascular subendothelium after vascular injury, and also initiates signaling events within the platelet that lead to enhanced platelet activation, thrombosis, and hemostasis. GP1BA is the alpha subunit. Glycoprotein Ib (GP Ib) is a platelet surface membrane glycoprotein composed of a heterodimer, an alpha chain and a beta chain, that are linked by disulfide bonds. The Gp Ib functions as a receptor for von Willebrand factor (VWF). The complete receptor complex includes noncovalent association of the alpha and beta subunits with platelet glycoprotein IX and platelet glycoprotein V. The binding of the GP Ib-IX-V complex to VWF facilitates initial platelet adhesion to vascular subendothelium after vascular injury, and also initiates signaling events within the platelet that lead to enhanced platelet activation, thrombosis, and hemostasis. This gene encodes the alpha subunit. Several polymorphisms and mutations have been described in this gene, some of which are the cause of Bernard-Soulier syndromes and platelet-type von Willebrand disease. Sequence Note: This RefSeq record was created from transcript and genomic sequence data because no single transcript was available for the full length of the gene. The extent of this transcript is supported by transcript alignments. Publication Note: This RefSeq record includes a subset of the publications that are available for this gene. Please see the Entrez Gene record to access additional publications.</p> <p>Alias Symbols: BSS, CD42B, CD42b-alpha, GP1B, MGC34595, VWDP, GPIbA, BDPLT1, BDPLT3, DBPLT3</p> <p>Protein Interaction Partner: DDIT3, OSGEP, TPST1, FLNB, YWHAZ, FLNA, F12, GP1BA, KNG1, VWF, F2, SELP, GP9, GP5, ITGAM, CTSG,</p> <p>Protein Size: 639</p>
-------------	---

Molecular Weight:	68 kDa
-------------------	--------

Gene ID:	2811
----------	------

NCBI Accession:	NM_000173 , NP_000164
-----------------	---

UniProt:	A5CKE2
----------	------------------------

Application Details

Application Notes:	Optimal working dilutions should be determined experimentally by the investigator.
--------------------	--

Application Details

Comment: Antigen size: 639 AA

Restrictions: For Research Use only

Handling

Format: Liquid

Concentration: Lot specific

Buffer: Liquid. Purified antibody supplied in 1x PBS buffer with 0.09 % (w/v) sodium azide and 2 % sucrose.

Preservative: Sodium azide

Precaution of Use: This product contains Sodium azide: a POISONOUS AND HAZARDOUS SUBSTANCE which should be handled by trained staff only.

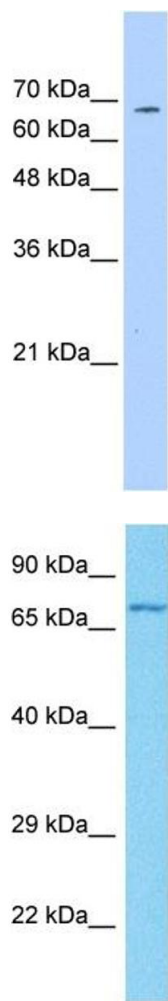
Handling Advice: Avoid repeated freeze-thaw cycles.

Storage: -20 °C

Storage Comment: For short term use, store at 2-8°C up to 1 week. For long term storage, store at -20°C in small aliquots to prevent freeze-thaw cycles.

Publications

Product cited in: Gerhard, Wagner, Feingold, Shenmen, Grouse, Schuler, Klein, Old, Rasooly, Good, Guyer, Peck, Derge, Lipman, Collins, Jang, Sherry, Feolo, Misquitta, Lee, Rotmistrovsky, Greenhut, Schaefer, Buetow et al.: "The status, quality, and expansion of the NIH full-length cDNA project: the Mammalian Gene Collection (MGC). ..." in: **Genome research**, Vol. 14, Issue 10B, pp. 2121-7, (2004) ([PubMed](#)).



Western Blotting

Image 1. WB Suggested Anti-GP1BA Antibody Titration: 0.2-1 ug/ml Positive Control: Jurkat cell lysate

Western Blotting

Image 2. Host: Rabbit Target Name: GP1BA Sample Tissue: Human 786-0 Whole Cell Antibody Dilution: 1ug/ml