

Datasheet for ABIN2784521
anti-CDC45 antibody (C-Term)[Go to Product page](#)

2 Images

Overview

Quantity:	100 µL
Target:	CDC45
Binding Specificity:	C-Term
Reactivity:	Human, Mouse, Rat, Cow, Dog, Guinea Pig, Horse, Rabbit
Host:	Rabbit
Clonality:	Polyclonal
Application:	Western Blotting (WB)

Product Details

Immunogen:	The immunogen is a synthetic peptide directed towards the C terminal region of human CDC45L
Sequence:	VTVVGIPPET DSSDRKNFFG RAFEKAAEST SSRMLHNNHFD LSVIELKAED
Predicted Reactivity:	Cow: 100%, Dog: 100%, Guinea Pig: 100%, Horse: 100%, Human: 100%, Mouse: 100%, Rabbit: 93%, Rat: 100%
Characteristics:	This is a rabbit polyclonal antibody against CDC45L. It was validated on Western Blot using a cell lysate as a positive control.
Purification:	Affinity Purified

Target Details

Target:	CDC45
Alternative Name:	CDC45L (CDC45 Products)

Target Details

Background:	<p>CDC45L was identified by its strong similarity with <i>Saccharomyces cerevisiae</i> Cdc45, an essential protein required to the initiation of DNA replication. Cdc45 is a member of the highly conserved multiprotein complex including Cdc6/Cdc18, the minichromosome maintenance proteins (MCMs) and DNA polymerase, which is important for early steps of DNA replication in eukaryotes. This protein has been shown to interact with MCM7 and DNA polymerase alpha. Studies of the similar gene in <i>Xenopus</i> suggested that this protein play a pivotal role in the loading of DNA polymerase alpha onto chromatin. The protein encoded by this gene was identified by its strong similarity with <i>Saccharomyces cerevisiae</i> Cdc45, an essential protein required to the initiation of DNA replication. Cdc45 is a member of the highly conserved multiprotein complex including Cdc6/Cdc18, the minichromosome maintenance proteins (MCMs) and DNA polymerase, which is important for early steps of DNA replication in eukaryotes. This protein has been shown to interact with MCM7 and DNA polymerase alpha. Studies of the similar gene in <i>Xenopus</i> suggested that this protein play a pivotal role in the loading of DNA polymerase alpha onto chromatin. Multiple polyadenylation sites of this gene are reported. Publication Note: This RefSeq record includes a subset of the publications that are available for this gene. Please see the Entrez Gene record to access additional publications.</p> <p>Alias Symbols: CDC45, CDC45L2, PORC-PI-1, CDC45L</p> <p>Protein Interaction Partner: CEP55, UBC, FBXO6, DTD1, TOPBP1, CAMK1G, MCM10, TRAPPC3, ORC3, ORC5, CDKN2A, CDKN1A, ALB, MRE11A, CUL3, NEDD8, CDK2, L3MBTL1, HIST1H3A, CCL2, MCM7, MCM4, MCM3, ORC2, POLA1, CDK4, ORC6, ORC1, MCM6,</p> <p>Protein Size: 566</p>
Molecular Weight:	65 kDa
Gene ID:	8318
NCBI Accession:	NM_003504 , NP_003495
UniProt:	O75419
Pathways:	Mitotic G1-G1/S Phases , DNA Replication , Synthesis of DNA

Application Details

Application Notes:	Optimal working dilutions should be determined experimentally by the investigator.
Comment:	Antigen size: 566 AA
Restrictions:	For Research Use only

Handling

Format:	Liquid
Concentration:	Lot specific
Buffer:	Liquid. Purified antibody supplied in 1x PBS buffer with 0.09 % (w/v) sodium azide and 2 % sucrose.
Preservative:	Sodium azide
Precaution of Use:	This product contains Sodium azide: a POISONOUS AND HAZARDOUS SUBSTANCE which should be handled by trained staff only.
Handling Advice:	Avoid repeated freeze-thaw cycles.
Storage:	-20 °C
Storage Comment:	For short term use, store at 2-8°C up to 1 week. For long term storage, store at -20°C in small aliquots to prevent freeze-thaw cycles.

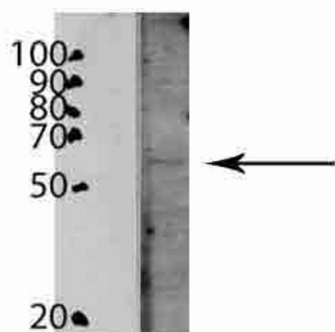
Images



Western Blotting

Image 1. WB Suggested Anti-CDC45L Antibody Titration: 0.2-1 ug/ml ELISA Titer: 1:12500 Positive Control: HeLa cell lysate CDC45 is supported by BioGPS gene expression data to be expressed in HeLa

CDC45L



Western Blotting

Image 2. WB Suggested Anti-CDC45L Antibody

Titration: 0.5 ug/ml

Positive Control: mouse stem cells

See Immunoblot 2 Data and Customer Feedback tab for more information.