

Datasheet for ABIN2784525
anti-IZUMO1 antibody (C-Term)



[Go to Product page](#)

1 Image

Overview

Quantity:	100 µL
Target:	IZUMO1
Binding Specificity:	C-Term
Reactivity:	Human
Host:	Rabbit
Clonality:	Polyclonal
Conjugate:	This IZUMO1 antibody is un-conjugated
Application:	Western Blotting (WB)

Product Details

Immunogen:	The immunogen is a synthetic peptide directed towards the C terminal region of human IZUMO1
Sequence:	SLALITGLTF AIFRRRKVID FIKSSLFGLG SGAAEQTVQP KEKATDSRQQ
Predicted Reactivity:	Human: 100%
Characteristics:	This is a rabbit polyclonal antibody against IZUMO1. It was validated on Western Blot using a cell lysate as a positive control.
Purification:	Affinity Purified

Target Details

Target:	IZUMO1
---------	--------

Target Details

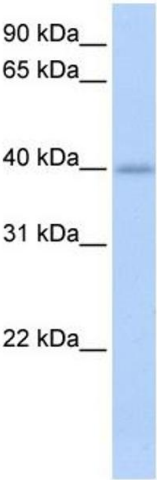
Alternative Name:	IZUMO1 (IZUMO1 Products)
Background:	<p>The sperm-specific protein Izumo, named for a Japanese shrine dedicated to marriage, is essential for sperm-egg plasma membrane binding and fusion. The sperm-specific protein Izumo, named for a Japanese shrine dedicated to marriage, is essential for sperm-egg plasma membrane binding and fusion (Inoue et al., 2005 [PubMed 15759005]).[supplied by OMIM].</p> <p>Alias Symbols: IZUMO, MGC34799</p> <p>Protein Size: 350</p>
Molecular Weight:	39 kDa
Gene ID:	284359
NCBI Accession:	NM_182575 , NP_872381
UniProt:	Q8IYV9

Application Details

Application Notes:	Optimal working dilutions should be determined experimentally by the investigator.
Comment:	Antigen size: 350 AA
Restrictions:	For Research Use only

Handling

Format:	Liquid
Concentration:	Lot specific
Buffer:	Liquid. Purified antibody supplied in 1x PBS buffer with 0.09 % (w/v) sodium azide and 2 % sucrose.
Preservative:	Sodium azide
Precaution of Use:	This product contains Sodium azide: a POISONOUS AND HAZARDOUS SUBSTANCE which should be handled by trained staff only.
Handling Advice:	Avoid repeated freeze-thaw cycles.
Storage:	-20 °C
Storage Comment:	For short term use, store at 2-8°C up to 1 week. For long term storage, store at -20°C in small aliquots to prevent freeze-thaw cycles.



Western Blotting

Image 1. WB Suggested Anti-IZUM01 Antibody Titration:
0.2-1 ug/ml ELISA Titer: 1:62500 Positive Control: Human heart