

Datasheet for ABIN2784545
anti-CRIP1 antibody (N-Term)[Go to Product page](#)

4 Images

Overview

Quantity:	100 µL
Target:	CRIP1
Binding Specificity:	N-Term
Reactivity:	Human, Mouse, Cow, Rat, Zebrafish (Danio rerio), Dog, Guinea Pig
Host:	Rabbit
Clonality:	Polyclonal
Conjugate:	This CRIP1 antibody is un-conjugated
Application:	Western Blotting (WB)

Product Details

Immunogen:	The immunogen is a synthetic peptide directed towards the N terminal region of human CRIP1
Sequence:	MPKCPKCNKE VYFAERVTSL GKDWHRPCLK CEKCGKTLTS GGHAHEGKP
Predicted Reactivity:	Cow: 100%, Dog: 100%, Guinea Pig: 92%, Human: 100%, Mouse: 100%, Rat: 100%, Zebrafish: 100%
Characteristics:	This is a rabbit polyclonal antibody against CRIP1. It was validated on Western Blot using a cell lysate as a positive control.
Purification:	Affinity Purified

Target Details

Target:	CRIP1
---------	-------

Target Details

Alternative Name:	CRIP1 (CRIP1 Products)
Background:	<p>Cysteine-rich intestinal protein (CRIP) belongs to the LIM/double zinc finger protein family, members of which include cysteine- and glycine-rich protein-1 (CSRP1, MIM 123876), rhombotin-1 (RBTN1, MIM 186921), rhombotin-2 (RBTN2, MIM 180385), and rhombotin-3 (RBTN3, MIM 180386).</p> <p>Alias Symbols: CRHP, CRIP, CRP1, CRP-1</p> <p>Protein Interaction Partner: UBC, CD81, SH3GL3, HAP1, GPRASP1,</p> <p>Protein Size: 77</p>
Molecular Weight:	8 kDa
Gene ID:	1396
NCBI Accession:	NM_001311 , NP_001302
UniProt:	P50238

Application Details

Application Notes:	Optimal working dilutions should be determined experimentally by the investigator.
Comment:	Antigen size: 77 AA
Restrictions:	For Research Use only

Handling

Format:	Liquid
Concentration:	Lot specific
Buffer:	Liquid. Purified antibody supplied in 1x PBS buffer with 0.09 % (w/v) sodium azide and 2 % sucrose.
Preservative:	Sodium azide
Precaution of Use:	This product contains Sodium azide: a POISONOUS AND HAZARDOUS SUBSTANCE which should be handled by trained staff only.
Handling Advice:	Avoid repeated freeze-thaw cycles.
Storage:	-20 °C
Storage Comment:	For short term use, store at 2-8°C up to 1 week. For long term storage, store at -20°C in small aliquots to prevent freeze-thaw cycles.

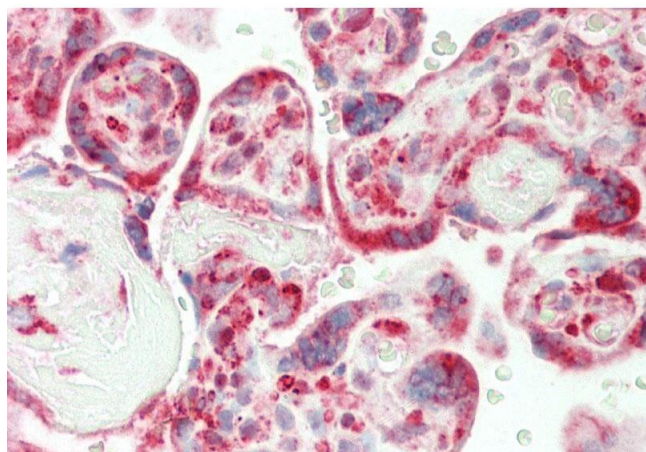


Western Blotting

Image 1. WB Suggested Anti-CRIP1 Antibody Titration: 0.2-1 ug/ml Positive Control: PANC1 cell lysate CRIP1 is supported by BioGPS gene expression data to be expressed in PANC1

Western Blotting

Image 2. WB Suggested Anti-CRIP1 Antibody Titration: 0.2-1 µg/mL Positive Control: PANC1 cell lysate CRIP1 is supported by BioGPS gene expression data to be expressed in PANC1



Immunohistochemistry

Image 3. Rabbit Anti-CRIP1 antibody Formalin Fixed Paraffin Embedded Tissue: Human Placenta Primary antibody Concentration: 1:100 Secondary Antibody: Donkey anti-Rabbit-Cy3 Secondary Antibody Concentration: 1:200 Magnification: 20x Exposure Time: 0.5-2.0sec

Please check the [product details page](#) for more images. Overall 4 images are available for ABIN2784545.